

PHOTOGRAM

June, 2004

In This Issue...

The Prez Sez Programs New Members Exhibits
New Image and New Sections: Members' Gallery RCC Bulletin Board
"Now Appearing" Field Trips Tips & Techniques

Help, Help, Help!

Nick Myrman, who faithfully served the club as Exhibits Chair, has regrettably resigned for personal reasons. Unless someone steps forward *right away* to assume his duties, our print exhibits will have a most uncertain future.

These exhibit activities have brought prestige and notice to our club, and have given our members an opportunity to show and sell their work.

We need someone to take over this position - *immediately!*

If you can help, please call Shirley Loflin at (909) 789-6622. We will get you all the information required and any help that you may need.

Let's show our appreciation to Nick by helping to support our club.

What's Next:

May 17 -- **Digital Primer & Photo Tour of the Getty**
Nancy Gall, RCC Photo Instructor

June 7 -- **Members' Night**

June 21 -- **Nature Photography Field Techniques**
Brian and Shirley Loflin

t.b.d. -- **Annual Potluck Dinner**
At Brian & Shirley Loflin's home

Redlands Camera Club is a group of amateur, serious-amateur and professional photographers who are interested in sharing experiences and advancing their skills. Anyone with similar interests is encouraged to attend a meeting: no cost or obligation.

We meet at 7:00 pm on the first and third Mondays of every month at
Redlands United Church of Christ, 168 Bellevue Avenue, Redlands, CA
Established in 1896 - Member of the *Photographic Society of America*

Questions?

• Call:

Shirley Loflin
(909) 789-6622

Frank Peele
(909) 793-4104

• Or come to a meeting! (See map on back page.)

THE PREZ SEZ...

Shirley Loflin

Dear RCC Members,

I've been really impressed with our recent programs. It's hard to imagine how Bernie could capture so many interesting "cavecapes" in total darkness. His tips and techniques were highly appreciated. Ralph's Alaskan images and equipment show-and-tell made for a most interesting program. If you're like me, I'm sure your desire was piqued to go to Alaska to shoot those marvelous and awe-inspiring landscapes.

We need more of these high caliber programs to continue. Several members have made good suggestions for additional programs. If you have additional ideas, or names of those who might make a good presentation, please tell Brian Loflin, our Program Chairman.

Top Ten "Photo Tips" For Summer

It's summer time. The living may be easy, but in Southern California it's hot, and it can be humid around coastal areas. It's time to remind you of a few things. So here's my list:

Keep It Cool! Hot cameras and film means disaster. Keep them insulated from the heat by placing them in coolers when not in use.

Bug Off! If you're doing outdoor photography, apply bug stuff *away from your gear* and thoroughly wash your hands. Insect repellent will ruin camera gear -- especially lenses.

Don't Sweat It! Perspiration can corrode gear. A dry towel removes moisture.



Bag It! Zip lock and trash bags can prove invaluable when confronted with a downpour, damp conditions, blowing sand or dust.

Sock It to Me! When carrying extra lenses without a large bag, slip each one into a large thick sock. Then put them into a purse or picnic basket, or hang them from a belt loop.

Camp Out! If the Great Outdoors is your studio, try camping in one of the many lake areas or State Parks. There you will find an abundance of trees, water, flowers, critters, birds and butterflies.

Skip It! If possible, stay out of the sun between 10 and 4. It's usually too hot, and the quality of light is not as good as early morning and late afternoon. The 'golden hours' for perfect lighting are around sunrise and sunset.

Don't Be A HotHead! Wear a hat with a brim and plenty of ventilation (straw hats are best). It can also help prevent sunburn.

Go West! If you can't leave home, let that wonderful sunlight into the west side of the house. Some of the most beautiful still lifes and portraits are done this way.

Rent To Own! The dog days of summer are a good time to visit a video store. National Geographic videos contain some great photography; or tune in to the Discovery Channel on TV. Long after the videos are returned, you'll still own the great ideas and inspirations for your next photo adventure.

On a separate issue, I extend my heartfelt **Thank You** to Nick Myrman for everything he has done for the club, and extend our very best wishes to him and his family.

Sincerely,
Shirley Loflin

APRIL 19TH PROGRAM

Bernard Szukalski

Bernie Szukalski had us all in awe; not only of his fabulous photography, but also of his 30-year hobby of crawling into the dark unknown of so many caves around the world!



Bernie says he has been “surveying” caves as a hobby. But as we listened to his presentation, there is nothing amateurish about his approach or his abilities.

Bernie uses totally manual cameras. As he explained, in the pitch black of the caves there is insufficient light for autofocus or autoexposure equipment. Everything he does – his compositions, exposures, flash settings, and distances are all calculated manually – in the dark with just his helmet light.



His dramatic images, including multiple exposures, were impressive enough before we learned they had been done with no automation at all. He does not create multiple exposures by repeatedly opening and closing the shutter. Instead, Bernie leaves the shutter open, then removes and replaces the lens cap while his subject moves from one position to the next!

We quickly developed a high level of respect for Bernie’s photographic skills. For those of you who did not make it to this meeting, you missed a lot more than a few slides of dark dirt. You missed out on seeing many dramatic images, and hearing the inspiring tales of a true professional; even if he does consider himself an amateur!

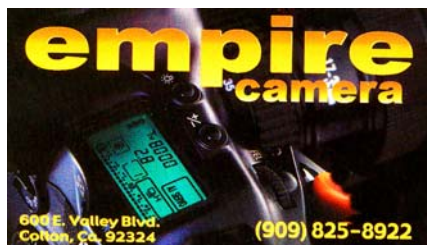
MAY 3RD PROGRAM

Frank Solis



Our May 3rd program was about dedication. Year after year, Frank Solis goes to Alaska to camp and make pictures. And let us be clear, we’re not talking motels or RVs; we’re talking tent, sleeping bag and below-freezing temperatures. He endures the freezing cold of Alaska, making “human sounds” to ward off wildlife while wandering the tundra – all for the sake of capturing the beauty of the land. He tents at a base camp then takes day trips to different areas to find the elusive “keeper” image. Frank brought his gear along for show-and-tell; it all fit into two duffel bags! One of them contained his photo gear; the other, his living gear.

Frank impressed us all with his wonderful images and techniques. He confirmed that he’s more than just a serious amateur photographer. His dedication to capturing the beauty of Alaska, while enduring the hardships of cold and the danger of wild beasts, with just the barest of creature-comforts, makes him a true adventurer!



UPCOMING PROGRAMS

Brian Loflin

May 17 -- Digital Photography at RCC and A Digital Tour of the Getty

Nancy Gall, photography instructor, Riverside Community College

Nancy Gall has a diverse graphic art and photography background. Today, she instructs digital photography and Photoshop to students of all ages through RCC. She will bring us a most interesting digital presentation of many of the skills she teaches.

Following this presentation she will present a virtual tour of the Getty Museum taken through her lens, as well as those of her students.



Photo courtesy of
Nathan MacHain
RCC Student

June 7 – Members' Night

Members are encouraged to share up to six 35mm slides, prints or digital files.

HOW TO CONFIGURE IMAGES FOR DIGITAL PROJECTION

All images downloaded onto CDs for projection should be:

- Image Size: long dimension 1020 pixels
- Resolution: 72 ppi
- File Format: JPEG
- Color Space: sRGB preferred for projector compatibility
- To prevent operational conflicts, do not include any other data or software on the CD.

*If you have any questions,
please contact
Frank Peele
(909) 793-4104*

Everyone can shoot snapshots. The purpose of a camera club is to take you beyond that.

Critique your work first; bring only the images you're really proud of, or that you want feedback on for improvement.

Images will be shown to the audience where techniques, challenges and opportunities will be discussed.

This can be a valuable educational experience for those who participate. Take advantage of these opportunities to advance your photography to the next level.

June 21 – Nature Photography Field Techniques

Brian and Shirley Loflin

Brian and Shirley Loflin have been nature photographers for many years. Together they have given many seminars and workshops, taught at prestigious Nature Centers and have published their first photographic nature field guide with *Texas A&M University Press*.

This presentation will provide detailed demonstrations of their techniques used to make publication quality images of plant and animal wildlife.

MARSHALL D. TAYLOR

Unique Mat & Frame

(909) 792-3120
611 W. Redlands Blvd. Ste. "B", Redlands, CA 92373

11161 Anderson Street, Suite 110 M - Th 9 - 6
Loma Linda, Ca 92350 Fri 9 - 3
(909) 558-4567 Sun 10 - 5
Closed Sat & Holidays

LOMA LINDA UNIVERSITY

campus store

NEW MEMBER PROFILES

Judith Sparhawk

Welcome to **Tyrone Bookman**

Tyrone Bookman is a new member of RCC. He's been interested in photography since high school, but has been more serious about it in the last year and a half.

Tyrone completed the New York Institute of Photography Beginning Course and is now taking the Advanced Course, including Portraiture. He uses a Minolta 35mm camera and enjoys photographing almost everything.

Tyrone works as a Facility Manager at Cal State University, San Bernardino, where he has been for 20 years. He lives in San Bernardino with his wife, and joined RCC to be around people who are interested in photography.

Welcome, Tyrone!

Welcome to **Allison Hiebert**

Welcome to Allison Hiebert of Redlands. She joined RCC when she took a class taught by Frank Peele. About half of his class were RCC members and says, "Everyone was so nice".

She is at home raising her children and received her Nikon N60 35mm camera as an anniversary gift.

Although she considers photography a hobby, she would love to get to the point where she can exhibit some of her work.

She is excited about the possibilities available through RCC. She has always been the family photographer, but also enjoys nature photography and wants to develop her knowledge and skills, including close-up work.

Welcome, Allison!

Welcome to **Cami Oetman**

Welcome to new member Cami Oetman.

She has a Masters in Social Work and did Clinical Therapy for some time.

Currently, however, she is just getting started in developing her interest in photography into a profession. She is mostly interested in fashion photography, and laughingly recalls being 7 years old and posing her Barbie Dolls, so she could take pictures of them!

She studied with Nancy Gall at Riverside Community College and uses a Nikon D100 digital camera.

Cami has traveled extensively in Asia and other parts of the world, and currently lives in Redlands.

Welcome, Cami!

Welcome to **Michael Picaut**

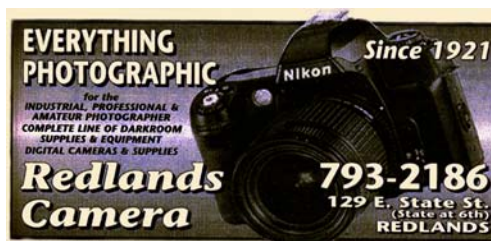
Michael Picaut recently joined RCC. He has been interested in photography for at least 20 years, encouraged by a high school teacher.

He grew up in Hawaii and California, studied Aerospace Engineering in Colorado, has his Ph.D. in BioEngineering, and now works as an Assistant Research Professor in Radiation Medicine at Loma Linda.

Michael sees photography as a hobby and enjoys shooting architectural subjects as well as his outdoor and travel activities.

He lives in Redlands and uses a Canon Rebel for his photography.

Welcome, Michael!



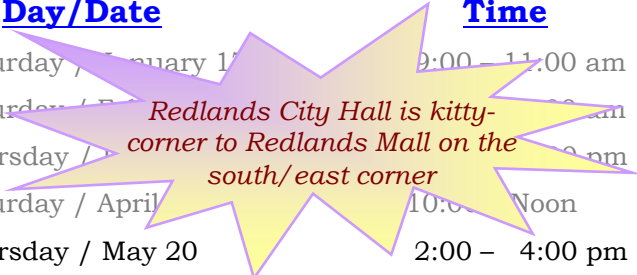
EXHIBITS

See *HELP* banner

The next exhibit will be held at *Redlands City Hall* on Thursday, May 20th from 2:00 – 4:00 pm. Bring your prints to hang! Prints will be “on the wall” for 3 months.

Tentative Exhibit Schedule for 2004

<u>Where</u>	<u>Day/Date</u>	<u>Time</u>
Redlands Community Hospital	Saturday / February 14	9:00 – 11:00 am
Redlands Mall	Saturday / February 21	9:00 – 11:00 am
Redlands City Hall	Thursday / March 4	2:00 – 4:00 pm
Redlands Community Hospital	Saturday / April 18	10:00 – Noon
Redlands City Hall	Thursday / May 20	2:00 – 4:00 pm
Redlands Community Hospital	Saturday / July 3	9:00 – 11:00 am
Redlands City Hall	Thursday / August 20	2:00 – 4:00 pm
San Bernardino Public Library	Wednesday / September 1	<i>(Hanging t.b.d.)</i>
Redlands Community Hospital	Saturday / September 25	9:00 – 11:00 am
San Bernardino Public Library	Thursday / September 30	<i>(Take down t.b.d.)</i>
Redlands City Hall	Thursday / November 4	2:00 – 4:00 pm
Redlands Community Hospital	Saturday / December 18	9:00 – 11:00 am



HELP

Exhibit Chairman
needed immediately
for the rest of the term.

Please contact
Shirley Loflin
(909) 789-6622

HELP

Member Exhibit Rules

The work must be yours, a member of the Redlands Camera Club.
The work must be ready to hang, using wire eyes and wire,
no saw tooth hangers.
You may use a frameless presentation, but the work must be glazed
(glass over the picture) for protection of the work.
There is a \$3.00 fee for each work hung: cash or check.
The work may be offered for sale, or not.
Your name, title of the picture, and sale price must be on the back

For more information contact

Display and sell your art at



CLASSES / PROGRAMS
ART CENTER
215 East State Street

Office DEPOT
What you need. What you need to know.

- SUPPLIES
- ELECTRONICS
- COPY PRINT CENTER
- FURNITURE

M-F 7-9
SAT 9-9
SUN 10-7

602 Orange Street
Redlands, CA 92374
Phone: (909) 793-2563 Fax: (909) 793-1523

MEMBERS' GALLERY

SHARE YOUR WORK

Members are encouraged to submit up to 2 images per month for inclusion on a space-available basis. Submitted images must be 300 ppi JPEG, no larger than 5"x 5" (will probably be reduced for publication). Editor will make every effort to display as many members' images as possible. See Photogram Submissions box for deadline and submission information.



Shoreline Village; Long Beach, CA
Steve Felber



San Jose Mission, TX
Jerry Reece



Vertigo
RCC award winner
Pat Backer



Tree In The Canyon
Walt Daly



Winter at El Capitan
Walt Daly



Fall Foliage, VT
Steve Felber



Columbine
Shirley Loflin



Diamondback
Brian Loflin



Cade's Cove, TN
Jerry Reece

TIPS & TECHNIQUES

From Members and Experts

Members are encouraged to submit Tips and Techniques that may benefit other club members.

See Photogram Submissions box for deadline and submission information.

On a space-available basis, Editor may also include articles or excerpts culled from outside sources.

Photography Water

Willard Clay: photographer The following is an incomplete excerpt from the July 2003 issue of **Outdoor Photographer** magazine

“The best way to blur water is to use a slow shutter speed. At ¼ to 1 second, you get the blurred effect, plus texture. When you go beyond 1 second, you get blur, but the texture starts to disappear.

Some people will meter the white water and treat it like snow. I’m not comfortable doing that. I use a 1-degree spot meter so I can get very precise. I look for colors in the water that aren’t influenced by the froth or the whiteness, and that’s what I’ll meter off of.

You don’t normally get blues in the water unless it’s a blue sky day. The lighter shade of blue, when there aren’t any clouds present, is a good color to meter off of. Bright greens will work as well. Orange and reds are good, but oranges tend to be a bit brighter, so you have to compensate for that. The best colors to meter off of are the blues and the reds.

Where the light is striking the water, or if I’m shooting in overcast light, I polarize. I polarize in overcast light to get rid of any glare and to intensify the colors. I don’t polarize if it’s a blue sky and I’m shooting water in the shade. If I’m getting a reflection off foliage, which is reflected in the water, I don’t polarize because that would lose the reflection. If you want to look past the reflection to see what’s underneath the water, then polarize it.

Reflections mean the water is in the shade and the light is hitting foliage, which is reflected in the water. I want to ensure that all water in my frame is in the shade. Reflected clouds tend to look a washed-out gray.

With most reflection images, the horizon ends up centered. Put your foreground in the water, the reflection in the middle and the mountains in the background. Now you’ve cut the frame into thirds. When I split a scene in half, I’ll take something of interest and set it off to the side so it’s not in the center, and this creates an emotional contrast.”

Positioning a Subject

This is an incomplete excerpt from Rick Sammon’s website. For the complete article, go to www.ricksammon.com/docs/articles.html

During my travels, I see people trying to take a picture of a person in a scene all the time. Most often, the photographer makes the same mistake: he or she asks the person to stand too close to the building or structure – and too far away from the camera. The result: the building fills the frame, which is a good thing; but the person is much too small in the picture, perhaps to the point where he or she is unrecognizable.

Generally speaking, you want to use a wide-angle lens set at a small aperture. With that setup, you can get a lot in focus – from a few feet in front of your camera to infinity.

Note: as the aperture size decreases (f/5.6 to f/8 to f/11, etc.), the depth of field increases. Also, as the focal length decreases (35mm to 28mm to 20mm, etc.), the depth of field at the same aperture also increases.

FIELD TRIPS...

Lisa Rutherford

When:

Friday
May 28th

Where:

Walt Disney Concert Hall
111 S. Grand Ave.
Los Angeles, CA 90012
For more information:

www.musiccenter.org and
www.metrolinktrains.com

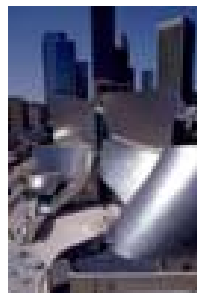
Contact Lisa Rutherford
(909) 849-0399 Field Trip Chair

Details:

Join other club members for a unique photography opportunity! Take the Metrolink to Union Station from San Bernardino, then grab a Metro Redline bus to the Music Center.

Spend the day photographing this architectural gem and meet up at local eateries. Lots to see!

More info and maps at the May 17th meeting when we can also discuss carpooling or rendezvous points.



Frank Peele

Certified Professional Photographer

personalized instruction
in award-winning
photographic techniques

(909) 798-7999 Frank.Peele@verizon.net
1309 Pacific St. Redlands, CA 92373



RCC Bulletin Board

Wanted

On a space-available basis, Notices, Requests and Classified Ads may be posted by any member. All postings must be photography related and cannot exceed 250 characters including punctuation, spaces, your name and contact information. 300 ppi JPEG pictures may be included. Editor may include, exclude, or edit postings as needed. See *Photoaram Submissions* box below for deadline and submission information.

An Invitation to all RCC Members

Patricia & Floyd Kooreny request the pleasure of your company at a Reception in celebration of their **50th Wedding Anniversary** on Sunday, June 13th from 3:00 to 5:00 pm.
Redlands Seventh-day Adventist Church
Fellowship Hall
520 Brookside Ave.
RSVP by June 6th
(909) 793-7222 or
FKooreny@msn.com

**STOP!
READ!**

This newsletter is now being distributed in color via e-mail. If you have e-mail but did not receive this issue, please notify Judith Sparhawk at www.jsparhawk746@mac.com of your correct e-mail address.



BODIE GHOST TOWN

From June 15th thru June 18th, John Brantley, Walt Daly, Steve Felber, Jerry and Bessie Reece will travel to Lee Vining, CA to photograph Bodie Ghost Town.
Anyone interesting in joining, please see one of us.

NOW APPEARING
If you plan to exhibit, let us know in advance. We'll post it here.



Pat's *Vertigo* and Mary's *Ambrosia* will be featured at the **Riverside Art Museum Annual Members' Exhibition**
Opening reception: May 14th, 6 - 8pm.
Mary's *Patchwork & Boarded Up* have been selected to show in the **National Orange Show**
All-California Juried Art Exhibition
May 27-31
689 South "E" St. San Bernardino



Riverside Art Museum Annual Members' Exhibition
3425 Mission Inn Ave.
Riverside
May 14 - June 26

PHOTOGRAM

SUBMISSIONS

Photogram Editor

Steve Felber
1990 Fairway Oaks Ave.
Banning, CA 92220

E-mail: SNFelber@Yahoo.com

Phone: (909) 769-6898

Deadline for all submissions is Noon of the 2nd Monday of each month

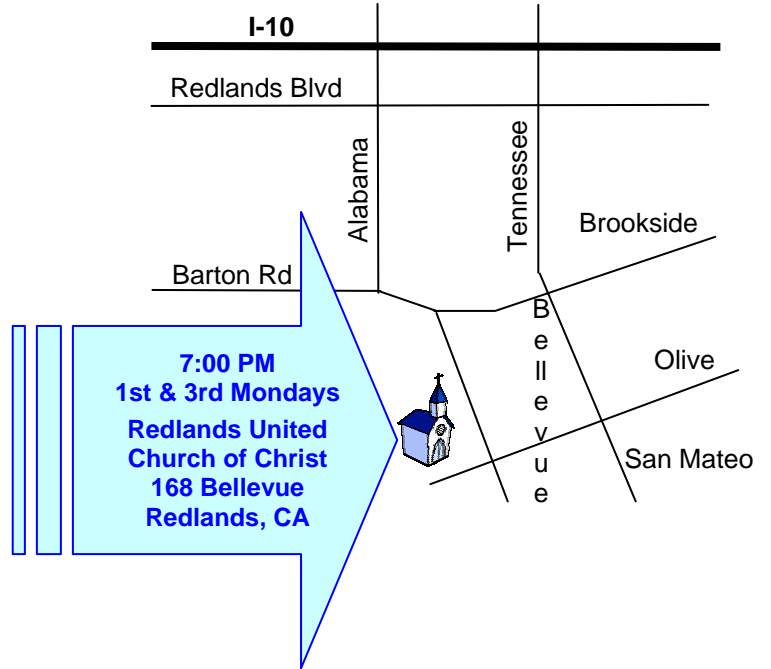
CLUB OFFICERS...

President	<i>Shirley Loflin</i>
Vice President	<i>Brian Loflin</i>
Secretary	<i>Robert Cutshaw</i>
Treasurer	<i>George Johnson</i>
Librarian	<i>Kish Doyle</i>
Publicity	<i>Walt Daly</i>
Photogram Editor	<i>Steve Felber</i>
Circulation	<i>Dennis Jackson</i>
Member-At-Large	<i>Larry Cowles</i>

CHAIRS

Programs	<i>Brian Loflin</i>
Membership	<i>Judith Sparhawk</i>
Exhibits	<i>t.b.d.</i>
Events	<i>Robin Grube</i>
Competition	<i>Frank Peele</i>
Field Trip	<i>Lisa Rutherford</i>

WHERE WE MEET...



PHOTOGRAM

Redlands Camera Club
P.O. Box 8311
Redlands, CA 92375