

PHOTOGRAM

www.RedlandsCameraClub.com

February, 2005

Redlands Camera Club is a group of amateur, serious-amateur, and professional photographers who are interested in sharing experiences and advancing their skills. Anyone with similar interests is encouraged to attend a meeting: no cost or obligation. We meet at 7:00 pm on the first and third Mondays of every month at **Redlands United Church of Christ**, 168 Bellevue Avenue, Redlands, CA.

Regular Features...

The Prez Sez Programs New Members Exhibits Members' Gallery



2024 Orange Tree Lane (Calif. Exit)
Redlands (909) 307-2669

Check out our club exhibit!

January 12th through February 19th
Tuesdays – Sundays 9:00 – 5:00

42
PRINTS
EXHIBITED!



See page 6
for more
details

BOARD MEMBERS!
BOARD MEETING at Marie Calendar's

7:00 p.m. Feb. 28th
Dine earlier,
if interested

COMING EVENTS

<p>February 7</p> <p>MEMBERS' NIGHT</p> <p>Bring up to 4 images & competition take-in</p>	<p>February 21</p> <p>TO BE ANNOUNCED</p>	<p>March 7</p> <p>EXOTIC PORTRAITS</p> <p>Bill Nord</p>	<p>March 21</p> <p>ANNUAL CLUB BANQUET</p> <p>& Award Presentations</p>
--	--	--	--

Questions? Call Shirley Loflin (909) 789-6622 or Frank Peele (909) 793-4104
Or come to a meeting! (see map on back page)

THE PREZ SEZ...

Shirley Loflin

Talk about starting the year right, not only do we have a beautiful print exhibit at the San Bernardino County Museum, but we received fantastic coverage in the Sun, Yucaipa, and Press Enterprise newspapers. We are so fortunate to have such wonderful exposure for this great club. I am privileged to be a part of it.

Judith Sparhawk did a terrific job in planning the Exhibit Reception with flowers, colorful tables, punch and a feast fit for a king. A **big thanks** for a **big job well done** and to all the members who helped and brought all the edible goodies. Did you see the cute little penguins made from olives? Really amazing!

Another big **thanks** to Nick Myrman and Brian for receiving all the prints at the check-in at the museum. And last, but certainly not least, another **thanks** goes to all our members who went to the great expense to prepare and contribute their work, and to all who attended and made the reception special.

Because of the exhibit and its publicity, we had a full house at our meeting on the 17th, where six more people joined. Our club now is up to about 150 members!

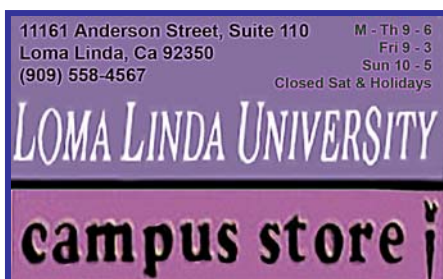
Just to make things more interesting in 2005, our club:

- ◆ Will have our first Digital Image Competition in February. Turn in your images at the first February meeting.
- ◆ Joined S4C and will start competing with other clubs soon.
- ◆ Will have new and exciting field trips, including an over-nighter or two.
- ◆ Will have our Annual Banquet and Digital Awards in March.
- ◆ Has new plans for a continuing educational program throughout the year.

Details on these and other activities will follow. Get the latest at the meetings and in your *Photogram*.

I sincerely wish everyone a Happy New Year and hope these plans will entice you as we continue to grow and evolve as a premier camera club.

Sincerely,
Shirley Loflin



UPCOMING PROGRAMS

Brian Loflin

FEBRUARY 7TH PROGRAM

Members' Night

This is the time where members get to present some of their favorite images.

Members are encouraged to bring up to four of their images, slides, prints or digital images.

Images will be shown to the audience while techniques, challenges, and opportunities will be discussed. This can be a valuable educational experience for all those who participate.

MARCH 7TH PROGRAM

*Members' Night and
Digital Competition Take-In*

Many club members have admired the many portraits of women in colorful head dresses that continue to win in our club competitions year after year.

These are the images of **Bill Nord**, a club member of several years and a member of *San Bernardino Lens and Shutter Club*.

Bill will bring one of his models and demonstrate his secrets of success.

He suggests that members also bring their cameras and participate in what promises to be a fun and instructive evening.

FEBRUARY 21ST PROGRAM

To Be Announced

MARCH 21ST PROGRAM

*Annual Spring Banquet and
Digital Competition Awards Presentation*

This is the time for the members to gather for a meal, camaraderie and an opportunity to know one another better.

This is also the annual installation of club officers.

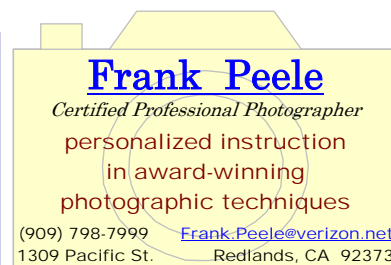
Mark your calendars so you don't miss this annual event. More details to follow as they are finalized.

HOW TO CONFIGURE IMAGES FOR DIGITAL PROJECTION

Images on CDs for projection should be:

- Image Size: long dimension 1020 pixels (14.167 inches)
- Resolution: 72 ppi
- File Format: JPEG
- Color Space: sRGB preferred. Do not include other data or software on the CD.

*If you have any
questions, please
contact
Frank Peele*



NEW MEMBER PROFILES

Judith Sparhawk

Welcome to **Michelle Smith**

Michelle Smith is a recent member of RCC. She took her first photography class about 10 years ago, but began pursuing the field more aggressively about 2 years ago, doing black and white work.

She has shot a couple of weddings and wants to do this more professionally. About a year ago she got a digital camera, a Fuji S-2 and has put together some DVD slide shows.

She is now starting to advertise and wants to support herself completely with her photography.

Michelle currently works as an Employment Program Representative with the State Employment Development Department.

She is enrolled in a certificate program in photography at Chaffey College.

Welcome to **Joe Sidor**

Joe Sidor recently joined RCC. Over the last two years, when he got a 4 megapixel digital camera, he has developed a more serious interest in photography.

He has taken the UCR certificate program in forensic photography, including crime scene documentation. He volunteers with the Citizen Patrol for the city, working with the forensics unit.

On a lighter note, his foreign travel over the years has taken him to about 60 countries. Just last year he was in China, Tibet, France, Morocco and Panama!

Joe and his wife have lived in Redlands for 30 years. He is semi-retired from his work as a Geotechnical Engineer. He is also an avid golfer and country-western dancer.

Welcome to **Sue Burchinal**

Susan Burchinal joined RCC in order to learn more, and "since I take such terrible pictures".

She reports having no background in photography, but as she has been exposing herself to more aspects of the field, has developed an increased interest.

She likes working in black and white as well as color, and is mostly interested in landscapes.

She is now retired and lives with her husband in Banning, where she pursues her interest in gardening.

Welcome to **Melody Groom**

Welcome also to new member Melody Groom. She has taken several photography classes, which included doing black & white work plus using the photo labs and darkrooms at school.

She shoots both film and digital photographs, sometimes using her digital skills in her work.

She has shot weddings for a few friends, which she enjoyed. Her favorite subject is nature photography.

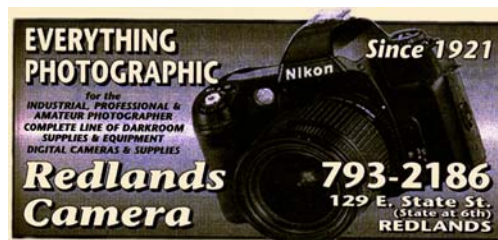
We look forward to seeing some of her work.

MARSHALL D. TAYLOR

Unique Mat & Frame

(909) 792-3120

611 W. Redlands Blvd. Ste. "B", Redlands, CA 92373



EXHIBITS

Rosedith Marx

The next exhibit will be at Redlands Community Hospital on **Saturday, March 12th from 9:00 to 11:00 am.**

Please e-mail **Bob Forsythe** by **March 5th** with label information for the images you plan to exhibit. It should contain your **name, title** of your photo, its **price if for sale**, and your contact **phone number or e-mail address.**

Then call Bob to confirm that he received your e-mail (see Schedule header for contact information).

One of our new members, **Joe Sidor**, has hung some of his photos for the first time at the *Redlands City Hall*. Thanks for participating, Joe!

Exhibit Schedule for 2005

For information contact Rosedith Marx: (951) 922-3890, XJCherokeeRose@aol.com

or Bob Forsythe: (951) 898-3233, BNCF@NetZero.com

Where	Date	Labels Due
Special Exhibit!		
<i>San Bernardino County Museum</i>	Take-in January 9 10:00 – 2:00	Recovery February 20 10:00 – 2:00
<i>Redlands Community Hospital</i>	March 12	March 5
<i>Redlands City Hall</i>	April 21	April 14
<i>Redlands Community Hospital</i>	June 4	May 28
<i>Redlands City Hall</i>	July 14	July 7
<i>Redlands Community Hospital</i>	August 27	August 20
<i>Redlands City Hall</i>	October 6	September 29
<i>Redlands Community Hospital</i>	November 19	November 12
<i>Redlands City Hall</i>	December 29	December 22

Member Exhibit Rules

The work must be yours, a member of RCC.
 It must be ready to hang using wire eyes & wire; no saw tooth hangers.
 You may use a frameless presentation,
 but it must be glazed (glass over the picture).
 Your name, title of the picture, and sale price
 (if for sale) must be on the back.

There is a \$3.00 fee for each work hung: cash or check.

INTERNET RESOURCES Got some to recommend? Submit them.

Photo Equipment Manufacturers (their on-screen quotes are in italic)

www.BogenImaging.US	"The Ultimate in Camera Support Technology!"
www.USA.Canon.com	Cameras, Printers, Scanners, Binoculars, etc.
www.Crane.com	Crane Paper Co.: cards, papers, etc.
www.CrescentCardboard.com	Mat board, Mount board, Art & Illustration products, Fine Art paper
www.Epson.com	Printers, Scanners, Cameras, Inks, Papers, etc.
www.FujiFilm.com	Film, Cameras, Software, Paper
www.HP.COM	Hewlett Packard: Computers, Digital Photog, Printers, Papers, etc.
www.lford.com	"Your partners in imaging"
www.Kodak.com	Film, Cameras, Papers, Software, etc.
www.LumierePhoto.com	"Fine Art Photographic Archival Supplies"
www.LumiJet.com	"Setting the standard for inkjet media and inks"
www.McGPaper.com	McGonigal Paper: Tri-fold & Bi-fold brochure stock, etc.
www.MoabPaper.com	"More than paper, it's a state of mind"
www.Nikon.com	Cameras, scanners, binoculars, industrial optics, etc.
www.PrintFile.com	world's leading mfg. of high quality archival storage products
www.RediMat.com	"Mat board of the highest quality"
www.SavagePaper.com	Photographic Equipment, Paper Crafts, Mats & Mat Boards

Display and sell your art at



Office DEPOT
 What you need. What you need to know.

- SUPPLIES
 - ELECTRONICS
 - COPY PRINT CENTER
 - FURNITURE
- M-F 7-9
 SAT 9-9
 SUN 10-7

402 Orange Street
 Redlands, CA 92374
 Phone: (909) 793-2563 Fax: (909) 793-1523

TIPS & TECHNIQUES

Photoshop Keyboard Shortcuts

Members are encouraged to submit Tips and Techniques (150 - 300 words) that may benefit other club members. See Photogram Submissions box for deadline and submission information. Editor may provide items from outside sources.

Power-Users of any computer program become so by minimizing the number of keystrokes or mouse movements needed to perform a task. *Photoshop* has many menu-driven commands that can be shortened by knowing and using the “keyboard shortcuts” listed to the right in each drop-down menu. Here are some of the basics:

EDITING FUNCTION	KEYBOARD SHORTCUTS (PC only)	DROP-DOWN MENU BAR COMMANDS
To Zoom In	Press Control +	View>Zoom In
To Zoom Out	Press Control -	View>Zoom Out
To Fit on Screen	Press Control 0 (zero)	View>Fit on Screen
To View at 100%	Press Control Alt 0 (zero)	View>Actual Pixels
To Show/Hide Rulers	Press Control R	View>Rulers
To Show/Hide Guides	Press Control ; (semi-colon)	View>Show>Guides
To Hide Palettes & Toolbox	Press Tab	
To Hide Palettes but not Toolbox	Press Shift Tab	

JANUARY

S	M	T	W	T	F	S
					1	
2	3	4	5	6	7	8
9	10	11	12	13	14	15
16	17	18	19	20	21	22
23	24	25	26	27	28	29
30	31					

MARCH

S	M	T	W	T	F	S
		1	2	3	4	5
6	7	8	9	10	11	12
13	14	15	16	17	18	19
20	21	22	23	24	25	26
27	28	29	30	31		

FEBRUARY

2005


SUNDAY	MONDAY	TUESDAY	WEDNESDAY	THURSDAY	FRIDAY	SATURDAY
		RCC BOARD MEMBERS!			4	5
		Mark your calendars for our				
		7:00 p.m. Feb. 28th				
		Board Meeting				
		at Marie Callendar's restaurant				
		1625 Industrial Park Ave.				
		Redlands				
		If you plan to dine before the meeting,				
		arrive in time to join the meeting at 7:00				
						

PHOTO OPPORTUNITIES THIS MONTH...

Can't make a field trip? Go on your own, or with other members!

- | | | | |
|---------------|---------------------------------------|--------------------|--|
| Feb. to April | Santa Rosa Plateau Ecological Reserve | Check for closures | www.santarosaplateau.org/ |
| Feb. 26 - 27 | 19th Annual Good Old Days Car Show | Temecula | www.temeculacarshow.com/ |

MEMBERS' GALLERY

SHARE YOUR WORK

Members are encouraged to submit up to 2 images per month for inclusion on a space-available basis. Submitted images must be 300 ppi JPEG, no larger than 5"x 5" (will probably be reduced for publication). Editor will make every effort to display as many members' images as possible. See Photogram Submissions box for deadline and submission information.



Bodie Window & Door
Lois Behrens



Chimping
Mike Harmon



Evory & Ibony
Chad Patrick



Gold Flag
Shirley Loflin



Angel's 9/11 Remembrance
Phil Ellsworth



Busy Bee
Allison Hiebert



Coral Color
Bessie Reece



Denise' Feet
Fred Nicoloff



Sunrise at Mesa Arch
Steve Felber



West Coast Sea Nettle
Kish Doyle



Don't Take My Picture
Jenny McGuire



Triple Vision
Jerry Reece



White-Faced Ibis
Karen Carter



Red Bush
Robin Grube

RCC Bulletin Board

On a space-available basis, Notices, Requests and For Sale Ads may be posted by any member.
All postings must be photography related and include your name and contact information.
300 ppi JPEG pictures may be included. Editor may include, exclude, or edit postings as needed.
See *Photoaram Submissions* box below for deadline and submission information.

FOR
SALE

Canon Equipment



A2 body: exc. cond. Includes instruction manual, body cap, neck strap, original box. KEH used price: \$235. **Will sell for \$175**

EF 24mm f/2.8 AF lens: Exc. Cond. with lens hood, both caps KEH used price: \$257 **Will sell for \$210**

EF 28-105mm f/3.5-4.5 "Macro" AF zoom lens: exc. Cond. with lens hood, both caps, original box. KEH used price: \$204. **Will sell for \$159**

EF 75-300mm f/4 – 5.6 AF IS zoom lens: exc. cond. with lens hood, both caps, original box. KEH used price is \$362. **Will sell for \$315**

Quantum Q-Flash Model T & Quantum Turbo battery: with manuals, all orig. access. in orig. boxes. High power portable flash, fast recycle, amazing versatility KEH used price: \$595. **Will sell for \$400**

Images made with these items have won a number of prizes, and the equipment has been very carefully used and maintained.

Frank Peele (909) 798-7999
Frank.Peele@verizon.net

Discount for combined purchases

FOR
SALE



Canon A2E 35mm camera body

Exc. cond. Includes instruction manual, body cap, extras. KEH used price: \$201. **Will sell for \$175**

Nick Myrman, (909) 797-7127
nick@myrman.com

Lowepro Pro-Mag 2 AW Camera Bag

\$60.00 (B&H new price: \$119.95)

- Shoulder and waist belts
- Built-in weather cover
- Detachable film pouch
- Mesh pockets on lid and sides
- Zippered and open inner pockets
- Lots of dividers for customizing

FOR
SALE



Steve Felber (951) 769-6898
SNFELBER@Yahoo.com

I carried a pro-sized 35mm SLR body with attached lens, a 70-200mm lens, and a flash attachment in the main compartment, many items in the mesh pockets, and film, notepad, pens, cards, etc. in the front pocket.



NOW APPEARING

If you plan to exhibit, let us know in advance. We'll post it here.



Award winning images
from the

Redlands Camera Club

Our first
S.B. County Museum
exhibit in 8 years!

42 prints on display!



San Bernardino Public Library

biblioteca pública de san bernardino

Norman F. Feldheym Central Library
555 West 6th Street - San Bernardino, CA 92410
909.381.8201

You are invited to see the
Photography Exhibit by

Peggy Burnett

January thru February

In the

Upper & Lower Galleries

Mon – Wed: 10 am – 8 pm

Thurs – Sat: 10 am – 6 pm

Closed Sunday

PHOTOGRAM

SUBMISSIONS

Editor

Steve Felber

1990 Fairway Oaks Ave.
Banning, CA 92220

E-mail: SNFelber@Yahoo.com

Phone: (951) 769-6898

*Deadline for all submissions is
the 3rd Tuesday of each month*

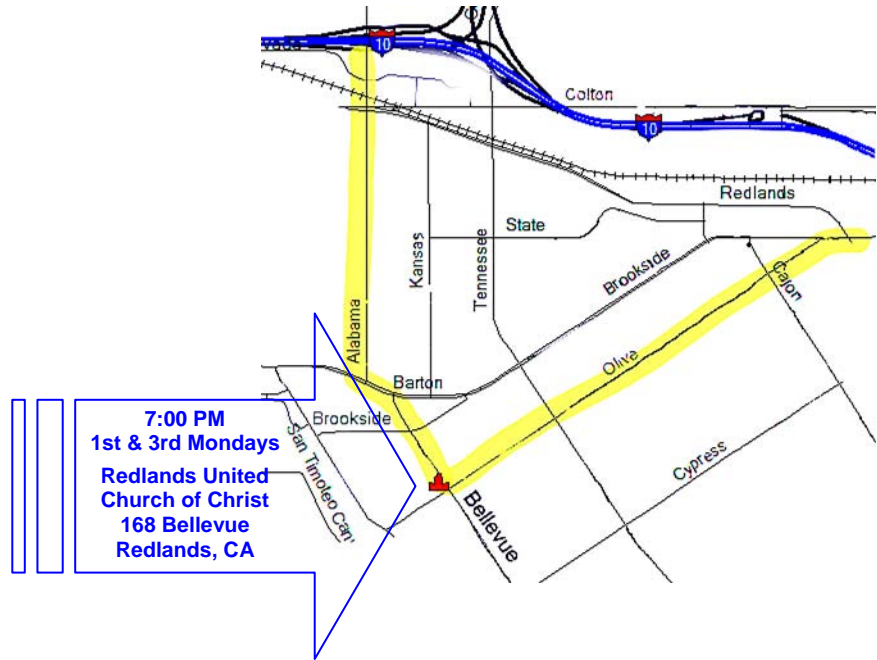
CLUB OFFICERS

President	<i>Shirley Loflin</i>
Vice President	<i>Brian Loflin</i>
Secretary	<i>Jerry Reece</i>
Treasurer	<i>George Johnson</i>
Librarian	<i>Kish Doyle</i>
Publicity	<i>Walt Daly</i>
Photogram Editor	<i>Steve Felber</i>
Circulation	<i>Dennis Jackson</i>
Member-At-Large	<i>Larry Cowles</i>

CHAIRS

Competition	<i>Frank Peele</i>
Events	<i>Robin Grube</i>
Exhibits	<i>Rosedith Marx</i>
Field Trips	<i>Phil Ellsworth</i>
Membership	<i>Judith Sparhawk</i>
Programs	<i>Brian Loflin</i>
Webmaster	<i>Robert Pincus</i>

WHERE WE MEET...



PHOTOGRAM

Redlands Camera Club
P.O. Box 7261
Redlands, CA 92375
