

Redlands Camera Club is a group of amateur, serious-amateur, and professional photographers who are interested in sharing experiences and advancing their skills. Anyone with similar interests is encouraged to attend a meeting: no cost or obligation.

We meet at 7:00 pm on the first and third Mondays of every month at **Redlands United Church of Christ**, 168 Bellevue Avenue, Redlands, CA (see back page for map).

May, 2011

MEET YOUR OFFICERS & CHAIRPERSONS

Pictured here are the club's newly elected and/or re-elected 2011 – 2012

Officers & Chairpersons.

Please say hello when you see them.

Getting to know those who help bring the programs, benefits, and activities to the club may help you enjoy the club more,



My apologies for publishing this picture one month late. My camera's battery was dead and it took me three weeks to find the charger.

Editor

- | | | |
|--|---|--|
| L to R: Frank Peele, <i>Education</i> | Wayne (Woody) Wood, <i>Webmaster</i> | Sandy Woodcock, <i>Publicity</i> |
| Carl Detrow, <i>ColorMunki</i> | Mike Reid, <i>Librarian</i> | Jennie Duncan, <i>Newsletter Circulation</i> |
| Steve Felber, <i>Newsletter Editor</i> | Richard S. Paul, <i>Exhibits</i> | Russell Trozera, <i>Competition</i> |
| Bessie Reece, <i>Membership</i> | Rick Strobaugh, <i>Treasurer</i> | Jerry Reece, <i>Secretary</i> |
| Bruce Woodcock, <i>Vice-President/Programs</i> | Dorothy Cunningham, <i>Hospitality Committee member</i> | |
| Bruce Bonnett, <i>President</i> | Judith Sparhawk, <i>Past President/Field Trips</i> | |

COMING ATTRACTIONS



PHOTOGRAM

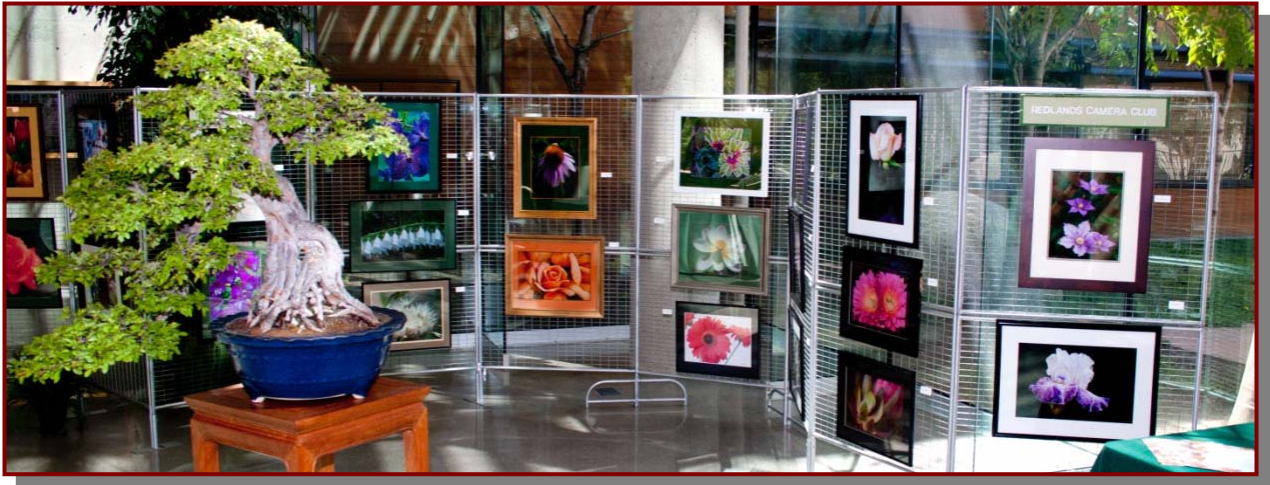
Distributed on the 1st of each month.
Deadline for all submissions is the **Last Thursday** of each month.

© **Redlands Camera Club and its Contributors.**
The contents of the *Photogram* are copyrighted.
No material herein may be reproduced in any manner without the written permission of the Editor or the material's specific contributor.

Editor: Steve Felber
(951) 769-6898
SNFelber@Yahoo.com

THE VIEW FROM HERE

Bruce Bonnett



Flowers here, flowers there, flowers everywhere! And for the fourth year in a row, our flower pictures were at the show. Okay, I'm no poet but our members did participate in the Redlands Horticultural Society's Flower Show and Garden Tour. The display, as pictured, showcased our member's contributions to this beautiful event which was hosted in ESRI's fabulous conference center. Our thanks go out to the Horticultural Society for inviting us back, to the members who contributed their images, and for Judith Sparhawk for her efforts in coordinating and setting up the exhibit. We received many comments on the beauty of the exhibit and how it complemented the event. As Judith has expressed in the past, and I re-echo now, it was impressive to see how different and striking all of the images were. It demonstrated how each of us, as artists, see the world with our own unique eyes and use our photographic skills to capture and express these images.

With the coming of Spring, there are flowers everywhere. Combine the riot of the flower's colors with the beautiful skies of blue contrasted by the clouds, and you have wonderful opportunities to express your skills and artistic talents. So grab your camera and tripod and be creative! Oh, and don't forget the birds, animals, and colorful insects that also surround us. There is beauty all around.

Remember to share four of your favorite images with the club on May 2nd as we meet for one of our Members' Nights. Bring your prints and/or digital images just to display or to get critiqued.

Then on May 16th join Frank Peele as he presents a program on hints for preparing your images for competition.

Redlands Camera Club P.O. Box 7261 Redlands, CA 92375

www.RedlandsCameraClub.com

CLUB OFFICERS

President: *Bruce Bonnett* **Vice President:** *Bruce Woodcock* **Past President:** *Judith Sparhawk*

Secretary: *Jerry Reece* **Treasurer:** *Rick Strobaugh*

CHAIRS

Circulation: *Jennie Duncan* **Color Munki:** *Carl Detrow* **Competition:** *Russ Trozera* **Education:** *Frank Peele*

Exhibits: *Richard S. Paul* **Field Trips:** *Judith Sparhawk* **Hospitality:** *Steve Oberholtzer* **Librarian:** *Mike Reid*

Member-At-Large: *Larry Cowles* **Membership:** *Bessie Reece* **Photogram Editor:** *Steve Felber*

Programs: *Bruce Woodcock* **Publicity:** *Sandy Woodcock* **Webmaster:** *Wayne (Woody) Wood*

PROGRAMS

Bruce Woodcock

MAY 2ND

Members' Night: Bring up to 4 images

Our first meeting of May will be Members' Night, where any member may bring up to 4 images (prints or digital) to share with the club.

This is an opportunity to bring potential competition images for input prior to the Apprentice Print Competition, or just bring along anything you would like to share or get critiqued.

MAY 16TH

Entering Photographic Competitions: Frank Peele

Are you nervous about submitting your photographs to be judged? Have you ever wondered why two images that appear to be similar can receive very different scores from the judges? Do you want to make your work better, whether to score higher in competition or just for your own personal satisfaction? Then this is the program for you!

Certified Professional Photographer, Frank Peele, will share his prize-winning techniques and will show specific examples of what distinguishes "nice" images from those that rise to "exceptional" status. Frank's work has been published in books and in magazines like *Sunset*, *Pro Photo West*, *Shutterbug*, and *Naval Aviation News*. He has been named Inland Empire Commercial Photographer of the Year several times, as well as California Scenic Photographer of the Year.

This program will be particularly tailored to Redlands Camera Club members preparing to enter the Apprentice Class Print Competition on June 6, but all photographers may benefit from the presentation. The subject matter will cover not only the steps to take when shooting, but techniques to use in image editing and in preparing prints for presentation as well

WEBMASTER

Wayne (Woody) Wood

We now have quite a few affiliate links on our web site.

Please consider clicking on these links if you are planning a photo or computer type of purchase. By going to these seller's web sites through our links, we will be paid a small percentage of each sale. It won't be much, but at the end of the year it could wind up being a sizeable amount.

We were turned down by **Adorama and Canon**. Not a smart move by these companies considering that we are arguably the oldest and largest *CAMERA* club in the USA. You might want to keep this in mind when you are considering making a purchase.

The links are on the opening page of our site as well as in the menu system on the left side of each page.

Zoom Scroll (Photoshop & Elements)

Rather than using the keyboard shortcuts (CNTR +, CNTR -, CNTR 0) to zoom in and out, if your mouse has one, use its scroll wheel.

If you press and hold the ALT key (MAC = Option) and use the scroll wheel, you can easily zoom in and out of your document.

If you need to adjust the wheel's sensitivity, go to Control Panel > Mouse > Wheel to make the adjustments.

Poor Depth -- Of -- Field control

If, when using a point and shoot camera, you are unable to control depth of field by using different *f*stops, the reason may be because compact digital cameras lack the ability to control depth of field through variable lens apertures.

When a camera has a very small imaging sensor, and therefore has a shorter focal length lens, compact digital cameras have a very large depth of field.

It isn't that you can't control the depth of field per se, but that the available range doesn't allow you to reduce the depth of field to a significant enough degree to obtain blurred backgrounds in many cases.

In other words, with a compact digital camera, the narrowest depth of field you are able to achieve is still what many photographers in many situations would deem a relatively large depth of field, at least for the circumstances.

Perhaps it's time to get that entry-level D-SLR???

Configuring Images for Digital Projection

Color Space: sRGB

Image Size: no smaller than 1280 pixels on the long side

File Format: jpg or jpeg

File Size: less than 3.5 mb (3,500 kb)

Image Title: (example) Blue Sky
(normal capitalization, spaces, punctuation)

File Name: bluesky
(no capitalization, spaces, punctuation)
SaveAs: bluesky in .jpg format;
it will automatically become "bluesky.jpg"

PRINT EXHIBIT RULES

The work must be yours, a current member of RCC.

It must be ready to hang using wire eyes & wire;
no saw tooth hangers.

You may use a frameless presentation.

Your name, title of the picture, and sale price (if for sale) must be on the back.

There is a \$3.00 fee for each work hung: cash or check.

Work left for another hanging will be charged again.

Work removed but not retrieved after a new hanging will be charged a \$3.00 storage fee.

Work unclaimed within 60 days of removal will be considered abandoned and become the property of Redlands Camera Club for disposal or sale at its sole discretion.

Bulletin Board

On a space-available basis, any RCC member can place photography-related ads on our Bulletin Board.

Just send an email to the Editor with the pertinent information and an ad will be created.

Or create your own ads (.JPG format, please) and email them as attachments. See bottom of Page 1 for due dates.

Nikon Gear for sale: very good condition

Nikkor AF-S DX 12-24 f/4G ED-IF lens (not for full frame sensors): \$600

Nikkor AF 18-35 f/3.5-4.5 D IF-ED lens (full frame & smaller sensors): \$275

AF Nikkor 80-200 f/2.8 D ED 2-ring lens (full frame & smaller sensors): \$900

D200 camera body 10.2mega-pixels (APS-C sensor): \$450

plus

Tamron AF 28-300 f/3.5-6.3 XR Di Aspherical IF lens (not for full frame sensors): \$275

You can find items like these on e-Bay selling for much more!

Steve Felber (951) 769-6898 (home), (951) 990-4251 (mobile) SNFELBER@YAHOO.COM

FIELD TRIPS

Judith Sparhawk

The field trip in May is to the Renaissance Pleasure Faire in Irwindale. We have never done the faire as a group event, but it offers many possibilities for photo opportunities, including people in costumes, action, architecture, food, and musical events. There is also an artisan marketplace with all sorts of items for purchase (or photography). Overall, it is a festive and fun event, and will be a new experience for those who have never been to such a faire.

Our trip will be on Saturday, May 14, 2011. Opening time is 10:00 am, with closing at 7:00 pm. Tickets purchased at the gate are \$25.00 for adults. Tickets may be purchased online for a slight discount. The web address is www.renfaire.com. The event is at Santa Fe Dam Recreation Area, and there is a \$10 access fee to the area. There is no additional parking charge once access has been paid.

It is recommended that we arrive before the gates open, for closer parking and to avoid some of the crowds. We can meet outside the gates as a group, and then head out on our own to explore the faire. It is about 50 miles from Redlands to Irwindale, and should take about one hour travel time on a Saturday. Carpoolers should meet at Coco's in Redlands at 8:20, to leave by 8:30 am.

Directions: Go west on the 210 freeway, take the Irwindale Ave. SOUTH to Arrow Highway, RIGHT on Arrow Highway to Azusa Canyon Road, RIGHT ON Azusa Canyon Road to the park. The actual street address of the park is 15501 E. Arrow Highway, Irwindale, CA 91706.

COMPETITION

Russell Trozera

The 2011 Apprentice Print Competition is upon us; you can start uploading images May 9, 2011 through May 25, 2011.

Competition judging will be on June 6th and the awards will be presented on June 20th. Please go to the web site to review the rules for the print competition. There is no fee for prints being entered into the competition. Remember; up to four images can be submitted.

I have recently learned that some of you are shy and don't like the limelight. If that is you, just let me know and we will announce your award without you having to come up in front of everyone to receive your ribbons. Have a great time creating your images!

EDUCATION/WORKSHOPS

Frank Peele

May 23, 2011: Preparing for Image Competition Judging: RCC members in at least the Intermediate competition entry category may prepare to serve on the judging panel of the upcoming Apprentice Print Competition. If space allows, others may take the workshop to help improve their competition scores.

July 2011: Get the Most from Your Digital Camera: From point-and-shoot to sophisticated DSLR, set your camera up to work the way you want it to for the best results.

Remaining workshops will be scheduled after review of the upcoming survey of members. We look forward to your thoughts and suggestions about the workshops you want to attend and when would best fit your schedule, so be sure to fill out the survey when it's offered.

MEMBERSHIP

Bessie Reece

Thanks to all of you that have renewed your dues for the Redlands Camera Club for April 2011 to April 1, 2012. If you have not yet renewed and need an application, it can be downloaded off our website or you may pick one up at the next meeting. Please try to renew before May 31th to insure that you will continue receiving the Photogram.

Please welcome the following new members:

Julie Jernegan: Julie Jernegan was raised in Hemet. She met her husband, Scott, while they were in high school, and have been married thirty-five years. They have two daughters and a three year old granddaughter. Julie is a member of the Hemet Art Association. She began taking photos of her daughters about fifteen years ago and has taken a few classes at Mt. San Jacinto College at both the San Jacinto and Menifee campuses. Her husband recently retired and they want to travel more to take great pictures.

Fred Christensen: Fred started taking pictures when he was about ten years old. His first camera was an Argus A2 that his uncle gave him. Through the years he progressed through a line of cameras. In high school and college he was a photographer for the school paper and annual. After he returned from the service, he began working in a camera store and expanded his knowledge of cameras. After almost 30 years in the camera business he retired and has been involved in the field of TV part time and has been doing a lot more photography. He currently uses a Canon 5D and a 60D, as well as a medium format camera for black and white photography.

De-Gassing a Print

Even the latest inks from ink-jet printers contain glycol and other chemicals that vary in their evaporation times. If a print is framed behind glass before these chemicals have had a chance to fully evaporate, over time they can leave a residue on the inside of the glass, which is relatively easy to see and can distract from the appearance of the print.

To resolve this "out-gassing" issue, it is best to place a sheet of absorbent paper over the print for 24-48 hours, replacing the sheets after 24 hours. Standard copier paper can be used for this purpose, but you could also use any uncoated and absorbent paper.

The paper may wrinkle due to absorbing the chemicals. Don't re-use the paper.

The paper used as a "sponge" may tend to wrinkle slightly and the paper may become saturated.

So to get the maximum benefit, use new sheets every 24 hours.

After about 48 hours it is generally safe to frame the print behind glass, although in areas with higher humidity you might want to allow extra time.

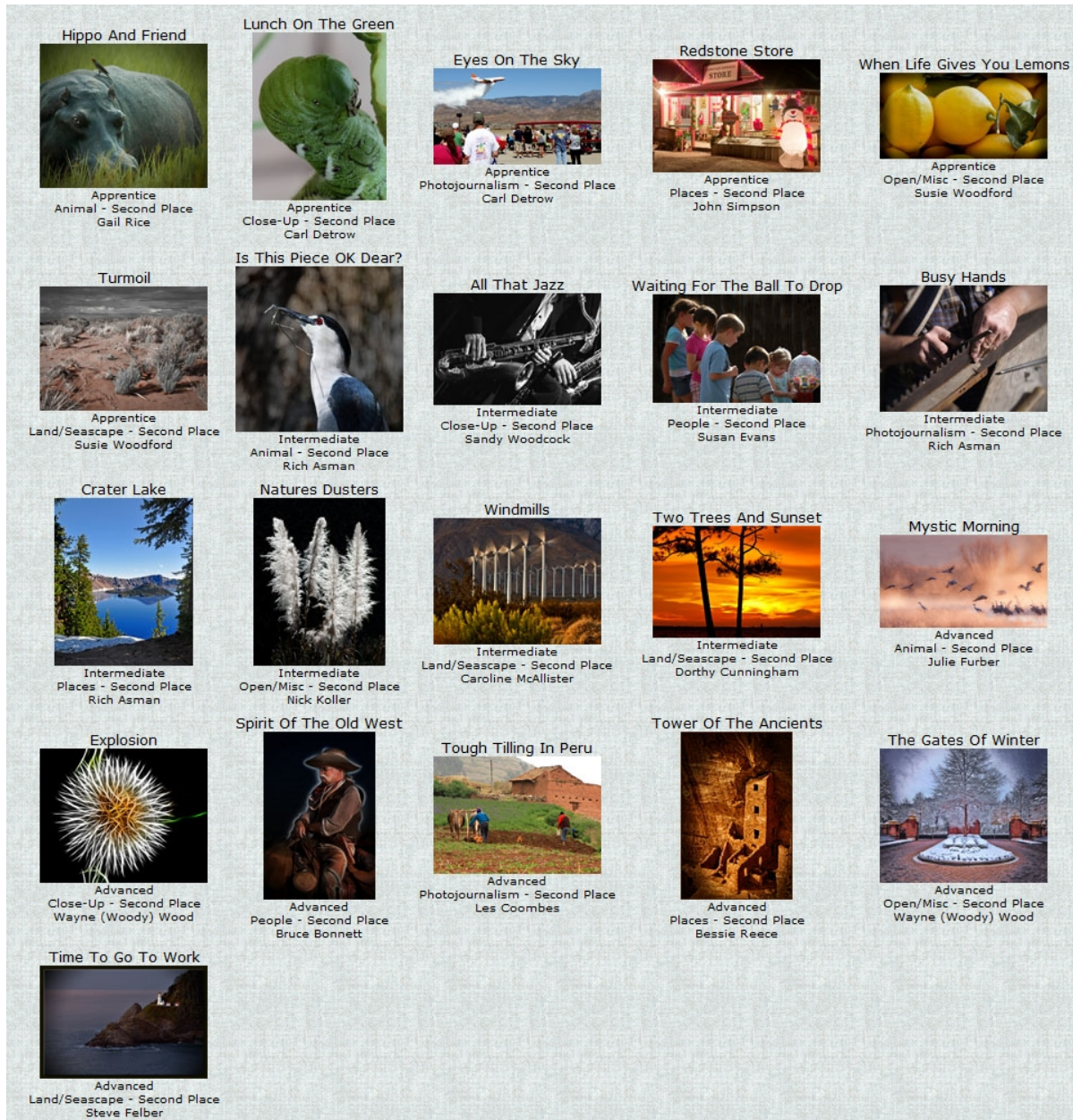
It isn't necessary to place paper over the print in the out-gassing process, but it is helpful.

If you don't put paper over the print, you'll need to allow more time for the out-gassing, since the lack of the "sponge" effect will cause the gasses to escape more slowly.

Don't stack the prints when using this process; doing so doesn't allow air to flow as freely and reduces the evaporation rate.

MEMBERS' GALLERY

2011 Spring Digital Competition: 2nd Place Ribbons



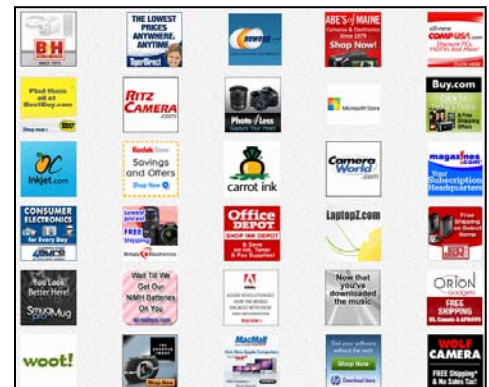
Affiliate Vendor Program

The businesses on the right have authorized RCC to become part of their Affiliate Vendor program.

When making photographic or computer-related purchases, you might want to consider them. They offer competitive pricing and good customer service.

By entering their websites through the RCC website (click on the Affiliate Vendors link), they will apply a small percent of your purchase towards an RCC account *without costing you anything extra!*

Please help RCC increase its treasury with this program so we can offer our members more or better quality benefits.



Want to join or renew your membership?

- *Complete this form and bring it to a meeting, along with annual dues*
- Or **Mail to:** P.O. Box 7261 Redlands, CA 92375 (make check payable to: *Redlands Camera Club*)

**WHERE
WE MEET...**

Name: _____ Phone: (____) ____ - _____

Name: _____ Relation to above: _____

Street Address: _____

City: _____ ST: _____ ZIP: _____

E-Mail: _____

Member \$25 **Additional Family Member \$20**

Redlands Camera Club
 7:00 p.m. -- 1st & 3rd Mondays

Redlands United Church of Christ
 168 Bellevue, Redlands, CA



PHOTOGRAM
 Redlands Camera Club
 P.O. Box 7261
 Redlands, CA 92375