



PHOTOGRAM

Monthly Newsletter of the Redlands Camera Club

May 2018

Photogram Editor - Wayne (Woody) Wood
Deadline for entries is the 25th of every month

Redlands Camera Club meets: 1st & 3rd Mondays, 7:00 pm
First Presbyterian Church - 100 Cajon St - Redlands, CA
Guests are always welcome at any of our meetings

Eye On The World

ColorMunki – Have your photos submitted for QuickPix, Members' Night, or competitions not looked the way you expected? The problem is probably a difference in how your computer and the club projector display colors and brightness. You can fix this by calibrating your computer the same way our club calibrates our projector – with the ColorMunki. Set up is simple and the calibration process only takes a few minutes. Contact **Jim Selby** at jim1423@earthlink.net to reserve the ColorMunki.

Puppy Portraits Help Shelter Pets Find New Homes

Click [HERE](#) for Slide Show

Monday, Oct 16, 2017 NBC4 News

RCC Member *Alex Woodcock* helps shelter pets find new homes by taking portraits of them. The photos of these furry creatures were taken at the Redlands Animal Shelter.



"I love photographing animals," Woodcock said. "So it's a rewarding way to use my photography skills to make shelter pets look more appealing and adoptable."

She says the photos help bring more people in to adopt animals that are waiting for good homes.

The shelter is open from 10 a.m. to 5 p.m. Tuesday through Friday and 10 a.m. to 4 p.m. Saturday. For more information, call 909-798-7644.

Want to learn more about your hobby?

Click the link below to go to **B&H Learning Video Site:**

Click [HERE](#)

Programs for May 2018

May 7
Equestrian
Photography
Alton Vance

May 21
Steve Walag
Abstract Photo Art

TBD

TBD

© Redlands Camera Club & Contributors. The contents of the *Photogram* are copyrighted. No material herein may be reproduced in any manner without the written permission of either the Editor or the material's specific contributor.



Programs

Jim Hendon

May 7 -- Equestrian and Southwest Photography with Alton Vance



Join us for an evening with Alton Vance, a Norco-based photographer known for his Horse Photography Roundups of horses and riders in action (check his gallery under “Equestrian”). Armed with top Canon cameras and lenses, he’s also an accomplished – and enthusiastic -- landscape shooter with a love for the West (he has even shot landscape videos using a gas-powered mini helicopter, and has since taken up drone videography, including equestrian subjects). Alton markets prints, note cards and other work via his website, which also features photo tips and lessons. At RCC, he’ll discuss equestrian photography, landscapes and workshop opportunities as well. For more on Alton: <http://www.nhislight.com/Index.htm>

May 21 – Abstract Photo Art with Steve Walag (submit abstracts May 14-18)



After an abstract recently won an RCC Best of Show, the time is right for learning more and sharing more of these images. Our featured speaker, photographer and teacher Steve Walag, has been exploring this slippery subject with students, and in his own work, for many years, with an emphasis on personal creativity. Steve has been a photojournalist, the UCR campus photographer, RCC staff photographer, architectural photographer and photography instructor. He has taught photography at RCC, UCR Extension and Mt. San Jacinto Community College and holds B.F.A. from Art Center College of Design in Pasadena. His present focus: adapting photographs into Japanese-inspired, fine-art floral images. Via the RCC web site, submit up to three abstract images from May 14 to 18 for sharing and discussion with Steve.



Field Trips - Debra Dorothy

May Field Trip

Orange Show Raceway

Date: May 26th

Location: San Bernardino County Orange Show 689 S. E Street San Bernardino California

Time: 6:00PM

Price: \$8.00 General, \$6.00 Senior

Parking: Free

K&N Pro Series West Night

Event Classes:

Open Late Models, 1-800 Loan Mart Street Stocks, Mini Stocks, Extreme Exhibits Outlaw Figure 8, Barber Pole

Carpooling: We will leave the Coco's Bakery Restaurant 1140 W Colton Ave, Redlands, CA 92374 at 5:30PM

If you plan on carpooling to event please let me know at least 1 day prior to event. If I don't hear from anyone regarding carpooling I will go directly to event.

You can find out more information about even by going to their website at <http://www.theorangeshowspeedway.co>

If you have any questions you can call me at 909 633-2913 or email me at Debbiedsd.dorothy@gmail.com



Prez Says - Dave Ficke

To Morgan



As I might have shared before, I love to go hiking. Yes, I prefer the mountains and some of my best hikes have been day hikes in the mountains. I have a great hiking buddy, probably the best hiking buddy anyone could ever want. He is always eager to go on a day hike and as we hike we always have each other's back. We travel at the same pace and we never get into any arguments. Yes, I do all the talking and he patiently listens; he is so happy to be with me. As Morgan walks about 50 to 75 feet in front of me, he looks over his shoulder to make sure I am ok. When there is a bend on the trail, he will come back and check on me to make sure I am okay. I want to believe that he just loves to go hiking with me, but I know that he does love the special treats that I bring for him. Morgan is my 12-year old Golden

Retriever, and the best dog and hiking buddy I ever had. I just found out last month that he has cancer.



It has been difficult; actually it has been hell and my heart breaks knowing Morgan struggles and can't go on any more hiking trips. The meds are helping but I know it is only a matter of time before he won't be able to get up any longer; although I am preparing myself for this, it is not easy. He is alert still and as he lies with his head between his front paws you can see one eyebrow up and then the other – he is watching me and I know he wants to go on another hike. He lies at my feet and I get down on the floor just to hold him and the pain is so visceral that it is beyond expression.

I have a friend Norm who is a nationally recognized crisis and grief counselor, most recently counseling victims of the Los Vegas shooting. He suggested that I write about Morgan and that it will help. I must confess that it really doesn't; the emotions are so raw that it hurts to the core of my soul. I am trying to do all I can to hold it together.

So what does this have to do with photography you say? As I try to remember all the great times we have had, my memory is aided by all the photographs, "selfies," of us together over these twelve years. It is probably something that you should do as well. Enjoy the time that you have together and document, photograph, the times you spend, whether it is your dog, cat, guinea pig, horse or your favorite reptile or bird--the one that you talk to, ask for advice and with whom you spend those special precious moments. There will come a time that your best friend and hiking buddy will be off to doggie heaven.



The news about Morgan has affected so many of our friends and family and there have been several toasts and many tears and we will all miss Morgan's solid temperament and loving nature. I will remember those times we had hiking, traveling in my truck and just hanging out working around the house. I will remember those times when he snuck off and ate the cat food and I would give him that look which he knew meant he had done something wrong. I always forgave him; who wouldn't want all that good protein?

Today my wife and I were traveling back from a planned trip to Morro Bay, visiting some old friends who have known Morgan since he was a puppy. Bob was glad that he could say goodbye to Morgan before we started the trip home. My wife and I stopped at In-in-Out for lunch and I brought out some French fries and gave a few to Morgan; he asked why he was getting French fries, and I said, "Because you are the best dog ever and I love you."

Every Day is Earth Day

Membership - Stephanie Billings

NEWS FLASH!

***You may now join RCC or renew your membership via PayPal
Just go to our WebSite at www.redlandscameraclub.com and
click on the link***



We're off to a Great 2018 Membership Year

Membership Renewal – We have started the renewal process for next fiscal year which starts April 1, 2018. So please make a concerted effort to renew your membership as-soon-possible. \$35 is a great deal for all of the benefits that Redlands Camera Club offers. Only currently paid members can take part in education classes, competitions, events, free workshops, and field trips. Dues are the primary source of club revenue allowing us to provide you with quality programs and training. Contact Stephanie Billings at HeartandSoul4@yahoo.com if you have any

questions about your membership renewal.

Prospective new members please note: At Redlands Camera Club you'll find a group of photo-enthusiasts with a wide range of interests, a ton of experience and a willingness to help you become a better photographer. Our regular club meetings offer stimulating programs, members' nights and competitions; in addition, we offer field trips, workshops, classes and opportunities for mentoring. You can obtain an application form at one of our regular meetings or from our website by going to the club web site (www.redlandscameraclub.org), clicking on the "Downloads" tab and then clicking on "Membership Application" tab. Follow the instructions on the form and your all set!

All members please introduce yourself to our newest members and help direct them to members who can assist them with their photography needs. We try to get a brief Bio from each of our new members. Contact me by email (HeartandSoul4@yahoo.com) If you would like your Bio to be included in the Photogram.

Please help me welcome our newest 2018 members:

Cheryl Challanan

Jana Deaton

Sue King

Janice McConnell

Dale Showman

Charlotte Sven

James Wilson

Competitions - Russ Trozera



Winter is over and Spring has sprung. There were a lot of nice images feature at the Redlands Flower Show by our members. Some of the images had been entered in our competitions. I thought the images were outstanding. I am very impressed by the quality work that our members produce. I recently viewed several galleries across the country and compared our images to theirs. The members of our club produce some very outstanding work.

The competitions are a great way of exposing our work to others and getting practical feed back on our images from people who understand photography. I would like to encourage our members who are just starting out or just getting back into photography to enter the competition. I see a lot of nice work done by photographers who classify themselves as apprentice photographers for the purposes of the competitions. They often times present a fresh of different point of view.

Category X this time will take us back into time to Black & White Photography. Entries in this category will be monochrome images.

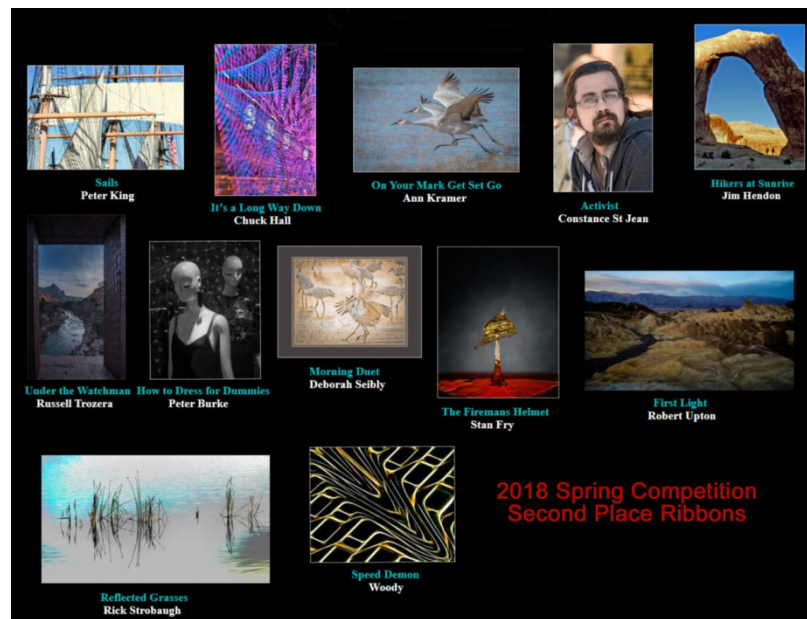
Our Summer Digital Competition. It will be held on July 2, 2018 and ribbons will be awarded on July 16, 2018. Members will be allowed to up load 2 images for this competition. Uploading photos will begin on June 4, 2018 and end on June 18, 2018 at 11 PM

Image Specifications:

- 1) The total file size must not exceed 3.5 MB or file will be rejected.
- 2) Files must be sized so the longest dimension is 4,000 pixels.
- 3) Resolution of 200 pixels per inch.
- 4) Each file must contain an embedded color profile of sRGB .
- 5) Save each file at JPEG quality setting 10 (Photoshop) 80 (Lightroom) or equivalent.

Looking forward to seeing many great images. If you have any questions please call Russ Trozera at 760 486 5269

RCC 2018 Spring Competition Second Place Ribbons



Club Calendar

Information that was available to the editor at the time of publication

May 7 - Equestrian and Southwest Photography with Alton Vance

May 21 - Photo Art with Steve Walag - (submit abstracts May 14-18)

May 26 - Field Trip Orange Show Raceway

New – Personal Lightroom Coaching with John Williams

RCC Members: Unique opportunity to make a difference

Frank Peele, Education/Workshops Chair

Museum of Redlands

This newly-established museum needs quality photography of items in its collection, and has asked RCC for support. This sounds like a win-win situation, both for the museum and for our members who want to develop skills in “product” photography. I envision a workshop to teach the fundamentals, and one or more shooting sessions to get into creating great images for the museum’s use. If you’re interested in being part of this service to the community, or just want to find out more about the opportunity, shoot me an email:

educationworkshopsrcc@gmail.com Thanks, Frank

Photo by Bruce Bonnett



What's New in Lightroom Classic CC 7.3 and Camera Raw 10.3 (April 2018 release) - John Williams

Lightroom Classic CC 7.3 release introduces **major updates** to the Develop module and improved Face Recognition, as well as new camera/lens support. This update applies to Lightroom Classic, Lightroom CC, Lightroom Mobile and Photoshop Camera Raw.



• **New Profiles:**

Prior to this release, Lightroom interpreted your RAW image and by default applied a RAW profile called “**Adobe Standard.**” It’s a very accurate rendering of your image tonally, but also very flat-looking and didn’t look like the JPEG preview you saw on the back of your camera. With this release there is a new default profile for your RAW images called **Adobe Color** (only when you import RAW photos) which is much more pleasing starting point than the Adobe Standard profile. It increases warm tones, improving the transitions between certain color ranges, and slightly increases contrast to your photos.

Adobe has moved access to your profiles to the top of the **Basic panel** (they used to be in the Calibration Panel). To access all your new profiles, click the Profile Browser icon (four small rectangles icon to the far right of the Profile field – red circle) at the top of the Basic panel.

IMPORTANT: You can’t apply a Raw profile to a JPEG, TIFF, or PSD file. The profile will say embedded or color for files other than RAW.

One of the major updates to profiles is the ability to hover your cursor over them and see a preview of the profile in the Images Display area.

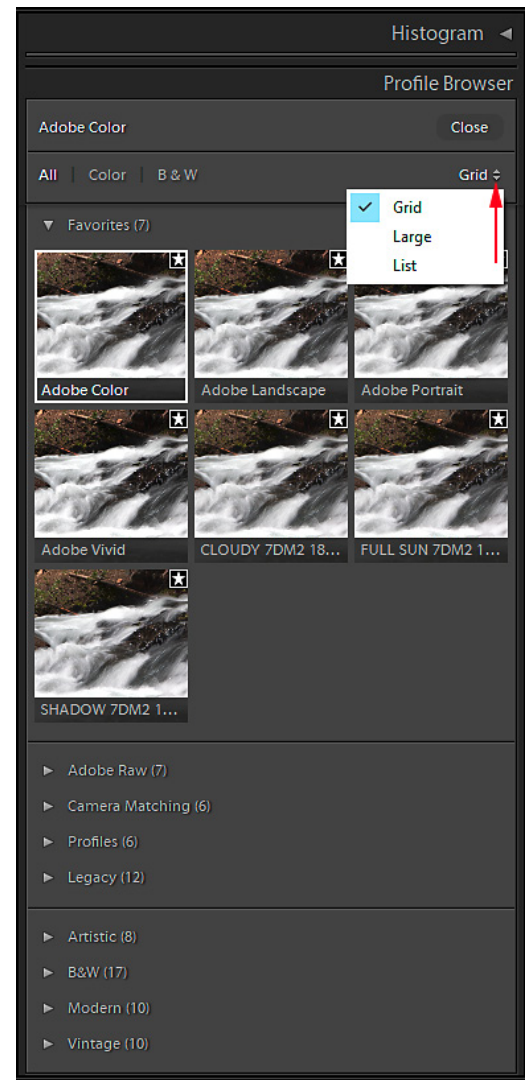
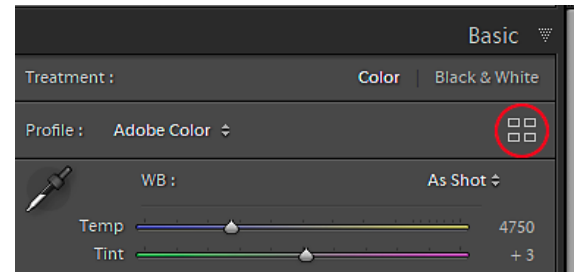
Favorites profiles: Click the **star icon** to add a profile to the Favorites group.. To remove a favorite profile, click the star icon in the Favorites profile group to remove it.

Adobe Raw profiles:

1. **Adobe Color** was designed to greatly improve the look and rendering of warm tones, improving the transitions between certain color ranges, and slightly increasing the starting contrast of your photos. Since Adobe Color is the new default (but only for newly imported photos), it was designed to work on the widest range of photos and ensures that regardless of the subject, your photo will look great.
2. **Adobe Monochrome** has been carefully tuned to be a great starting point for any black and white photograph, resulting in better tonal separation and contrast than photos that started off in Adobe Standard and were converted into black and white. It slightly shifts colors and will brighten warm colors and darken cool colors. It also adds a small amount of contrast
3. **Adobe Portrait** is optimized for all skin tones, providing more control and better reproduction of skin tones. With less contrast and saturation applied to skin tones throughout the photo, you get more control and precision for critical portraiture.
4. **Adobe Landscape** was designed for landscape photos, with more vibrant skies and foliage tones. It adds saturation to all the colors and enhances blue and green colors. It adds a slight amount of contrast and compresses highlights and shadows to maintain detail.
5. **Adobe Neutral** provides a starting point with a very low amount of contrast, useful for photos where you want the most control or that have very difficult tonal ranges. Use this profile if you have delicate colors.
6. **Adobe Vivid** provides a punchy, saturated starting point. If you have people in the image, then this would be a good profile to use.

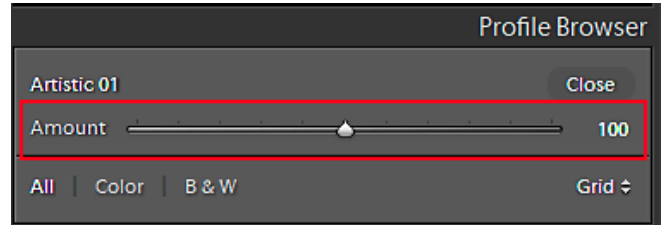
Camera Matching Profiles: These profiles are designed to match the preset “styles” that you set using the menus on a camera. Because the style options differ among camera manufacturers, this list of profiles will change depending on your camera.

Profiles: This section are profiles you created such as using X-Rite Color Checker Passport software.



Legacy: Legacy Raw profiles are your old profiles that are included in order to maintain backwards compatibility when working with legacy files.

Creative Profiles: There are four groups of profiles: Artistic, Black & White, Modern, and Vintage. They can be applied to **both** raw and non-raw photos. The Creative profiles were designed to create a look and feel in your photos and were developed using Photoshop's 3D Lookup Table (LUT). Creative Profiles also provides an Amount slider, enabling you to increase or decrease the effect (not available for Adobe Raw profiles), fine tuning the look to your taste.



1. **Artistic Profiles:** The Artistic profiles are designed to be more edgy, with stronger color shifts.
2. **B&W Profiles:** The B&W profiles are optimized for high impact black and white work, offering a range of color channel mixes and tonal adjustments. Some of the profiles imitate the effect of adding a red, **orange, yellow, green** or **blue** filter.
NOTE: The B&W icon is missing from the **HSL/Color panel** and you can only select B&W profiles from the Profile Browser.
3. **Modern Profiles:** These profiles represent current fashions in photography.
4. **Vintage Profiles:** Vintage profiles are designed to look more like film photos.

After selecting a profile, click the **Close button** to see your Basic panel sliders.

- **Preset Panel:**

The Preset format has changed from .lrtemplate to .xmp files, so that presets are fully compatible with the Camera Raw plug-in.

Upon launch of 7.3 you probably saw a message about updating develop presets to XMP. What happened was Lightroom converted your existing custom Develop presets to a format compatible with the Camera Raw plug-in, and then copied the XMP versions to a folder shared with the Camera Raw plug-in, so now your custom Lightroom Classic presets are available inside the Camera Raw plug-in. It left the original custom presets where they were, but appended a ~ to the front of the file name to remain backwards compatible with older versions of Lightroom Classic.

New file preset location: C:\Users\[name]\AppData\Roaming\Adobe\CameraRaw\Settings

Old file preset location: C:\Users\[name]\Pictures\Lightroom\Lightroom Settings\Develop Presets

You now get a full screen preview of a preset simply by hovering your cursor over the preset. The Navigator will still change to a preview like it use too.

To import presets, click the plus icon in the presets panel field and choose **Import Preset(s)**. Navigate to a preset, select it, and Lightroom CC will automatically install it.

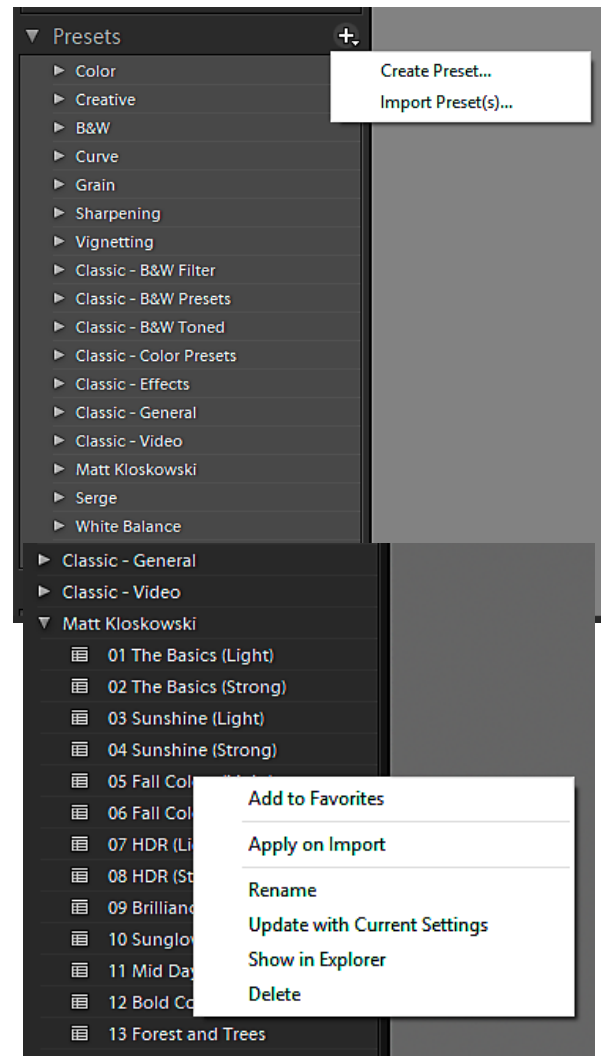
Create a Preset: In the Develop module, make all your slider adjustments and choose a Profile such as Adobe Color. Click the down arrow next to the plus sign and select **Create Preset**. A **New Develop Preset** window will launch. If you want to include the Profile, make sure you check **Treatment & Profile** box.

Some of the preset management tools, like creating, renaming and deleting new folders, have gone missing in this release. Hopefully Adobe will address these missing features in the next update.

We used to be able to right-click a custom folder (or the User Presets folder) and access a contextual menu for creating new folders, but that is gone. Contextual-clicking any custom preset folder only brings up an Import menu option, so there is no way to rename preset folders within Classic at the moment.

You still need to click the preset to apply it to the photo just as before. Adobe has added several new presets.

Favorite Presets: To mark a preset as a Favorite, right-click the preset and choose **Add to Favorites** from the contextual menu. This adds the selected preset to a Favorites folder that appears at the very top of the Presets panel (only appears after adding a Favorite). After adding presets to the Favorites folder, you can rename the presets with a leading number to sort them into an order that makes sense to you by right-clicking the preset and in the popup menu select **Rename**.



You can still access the contextual menu on individual preset as shown in the figure to the right.

To hide a Preset set: You can only do this in Photoshop. Open Camera Raw in Photoshop (open a raw file in PS or go to **Filter > Camera Raw Filter**). Then in the Presets Panel, right-click any of Preset sets and choose **Hide Preset Set**. You will need to restart Lightroom.

- **Dehaze Slider:**

The Dehaze slider has been moved from the Effects panel to the Basic panel (under the Presence section).

- **Tone Curve/Face tagging:**

The Tone Curve panel size has expanded for more precise adjustments, and the face-tagging algorithms have been optimized for more accurate detection of faces. If **Catalog Setting > Metadata tab > Automatically detect faces in all photos** is checked, you don't need to do anything to benefit from the new changes.

- **Sharpening Default Amount has changed:**

The default sharpening setting for raw files has changed from 25 to **40**. Probably Adobe was tired of everyone saying that Capture One is sharper. Note that this new default adjustment can be too strong for some photos especially with noisy photos. Recommend you make a Preset that contains a Profile, Remove Chromatic Aberration, Enable Profile Correction and a sharpening amount of **25**. Then on Import, select this Preset.



This is All Mine: Photo by Woody



S4C Information - Deborah Seibly



For the March competition, honorable mentions and awards were won by Beverly Britt, Jim Hendon and Deb Seibly in the categories of Individual Color, Nature-Wildlife, Photo Travel, Photojournalism and Pictorial Monochrome.

I recommend going to the S4C website to view the catalogue of winners. One will get a feeling for the level of photographic skill represented as well as what photos fit in the many categories.

I continue to encourage members of RCC to enter images in S4C as a further step in your photography adventure. Each competition receives anywhere from 700 to 800 images in total from approximately 15 participating clubs in Southern California. So branch out and try your luck in a bigger pond!

Respectfully submitted
Deb Seibly

Photo by Bruce Bonnett





RCC Photo Blog

Carl O'Day

Photo by Stephanie Billings

We are up to 70 users and almost 1,100 images on the RCC Photo Blog. If you do not already have an account, **send an e-mail to signup@rccphotoblog.com** and we will get you set up. The blog is a great place to get input on your images. Other Members' images can help you find some inspiration (and perhaps some motivation).



We are working on the image color issue for some images. When images are submitted they are resized to fit different screens. In this process, they are desaturated a bit. We don't know the cause of the problem yet, but are working on a solution.

I got tired of sifting through photography sites and blogs trying to find useful learning material. In response, I created pbdigest.com – a curated (sort of) collection of photography articles from over 100 photography blogs. Given that this site helps me keep track of useful learning resources, I thought club members may benefit too. I would also be interested in any feedback you might have. Thanks for taking a look and I hope the site is helpful to you.

Film cameras and Lenses Needed

A group of photo-enthusiasts at Riverside Community College needs FILM cameras and lenses to use in their studies. If you have such equipment you're willing to donate to a worthy cause, please contact RCC member Constance St Jean and let her know what you have. **Contact her by email at constancestjean@gmail.com**

For Sale: New in Box

Tascam DR-60D Digital Audio Recorder



Want to greatly improve the audio quality of videos made with your DSLR, Mirrorless or other digital camera? Tascam, the professional division of Teac Audio, has your solution – the DR-60D 4-channel audio recorder. Built to mount under your camera either on or off a tripod, this recorder offers 2 professional balanced XLR or ¼” TRS mic inputs plus a 3.5 mm stereo mic input. Its many modes allow you to capture very high-quality sound, tailor the sound to your preferences, and use microphones of widely different types. The LCD screen is fully visible in

any lighting condition (even direct sunlight), and complete controls put you in charge of your recordings. In addition to its potential for recording audio for video, its many capabilities make it an excellent choice for any high-quality audio recording – music, voice or you-name-it. Unit is in original box, has never been used, and comes with all included accessories. Sells on Amazon for \$179; priced for quick sale at \$119.

Frank Peele, 909.798.7999, or email to FrankPeele@verizon.net

Approximately 30 brand new photo frames for sale. Sized from 8x12 on up to 18x24 and much larger. Contact **Rick Strobaugh:**
rpdrunner@msn.com

Photo by: Bruce Bonnett



Photo by Debra Dorothy



Redlands Camera Club P.O. Box 7261 Redlands, CA 92375

www.RedlandsCameraClub.com

Officers (2017-2018)

President: Dave Ficke - Vice President/Programs: *Jim Hendon* - Secretary: *Judith Sparhawk*
Treasurer: Ann Kramer - Past President: Carl Detrow -

Chairs (2017-2018)

Competition: *Russ Trozera* - Education/Workshops: *Frank Peele* Facebook/Event
Photographer: *Bruce Woodcock* - Field Trips: *Debra Dorothy*
Historian: *Bruce Bonnett* - Hospitality/Events: *Lucy McGee* - Librarian: *Mary Ann Ponder*
Membership: *Stephanie Billings* - Mentor: *Rick Strobaugh* - Photogram: *Wayne (Woody) Wood*
Publicity: *Alex Woodcock* - S4C: *Deborah Seibly* - Color Munki: *Jim Selby*
Webmaster: *Wayne (Woody) Wood* - Welcome: *Stephanie Billings*