



PHOTOGRAM

Monthly Newsletter of the Redlands Camera Club

June 2018

Photogram Editor - Wayne (Woody) Wood
Deadline for entries is the 25th of every month

Redlands Camera Club meets: 1st & 3rd Mondays, 7:00 pm
First Presbyterian Church - 100 Cajon St - Redlands, CA
Guests are always welcome at any of our meetings

Eye On The World

ColorMunki – Have your photos submitted for QuickPix, Members' Night, or competitions not looked the way you expected? The problem is probably a difference in how your computer and the club projector display colors and brightness. You can fix this by calibrating your computer the same way our club calibrates our projector – with the ColorMunki. Set up is simple and the calibration process only takes a few minutes. Contact **Jim Selby** at jim1423@earthlink.net to reserve the ColorMunki.

Puppy Portraits Help Shelter Pets Find New Homes

Click [HERE](#) for Slide Show

Monday, Oct 16, 2017 NBC4 News

RCC Member **Alex Woodcock** helps shelter pets find new homes by taking portraits of them. The photos of these furry creatures were taken at the Redlands Animal Shelter.



"I love photographing animals," Woodcock said. "So it's a rewarding way to use my photography skills to make shelter pets look more appealing and adoptable."

She says the photos help bring more people in to adopt animals that are waiting for good homes.

The shelter is open from 10 a.m. to 5 p.m. Tuesday through Friday and 10 a.m. to 4 p.m. Saturday. For more information, call 909-798-7644.

Want to learn more about your hobby?

Click the link below to go to **B&H Learning Video Site:**

Click [HERE](#)

Programs for June 2018

June 4

Creating Great
Black and White
and Monochrome Images

June 18
Above All with
Aerial Photographer
Mark Holtzman

© Redlands Camera Club & Contributors. The contents of the *Photogram* are copyrighted. No material herein may be reproduced in any manner without the written permission of either the Editor or the material's specific contributor.



Programs

Jim Hendon

June 4 -- Creating Great Black and White and Monochrome Images



Anyone with a computer can make a monochrome image from a color photo -- but can you make a great image? Black and white is where it all started, the turf of the great masters, and it remains today a revered format for landscape, architecture, portraits, just about every kind of photo. Many RCC shooters enjoy the format -- just check the BLOG. Jim Hendon will share some images and explore why black and white remains attractive to the enthusiast photographer. Resident pro Frank Peele will show us some tips and tricks for converting color to black and white with great results. And Jim Smart, an accomplished photographer and teacher who has led black-and-white workshops for the Desert Institute, will discuss his current focus on shooting black-and-white film and making fine art prints.

June 18 -- Above All with Aerial Photographer Mark Holtzman

Taking a photo of a plane isn't hard. Taking an award winning photo of a stealth fighter -- from above -- while flying over the Rose Bowl game, well, only a few can do that well. Meet California native Mark Holtzman, a photographer and pilot for more than 25 years, who learned photography at his father's knee starting at the age of 10. A former lifeguard and paramedic, Mark launched West Coast Aerial Photography in 2000 and has been full time in this specialty with his son for more than a decade. He'll share his experiences and expertise in this special RCC program. For more on Mark and his work, visit his web site at www.markholtzman.com



June Field Trip

Los Angeles Art District

Date: Saturday, June 9th

To: Los Angeles Arts District

Cost: Weekend day pass costs \$10 and includes transfers and return trip

We will meet in front of the ticket counter at 8:30AM at the Riverside Downtown Metrolink Station, [4066 Vine Street](#). Free parking

For those who would like to carpool to event we will meet at the Coco's Bakery Restaurant in Redlands 1140 W Colton Ave Redlands, CA at 8:00 to carpool to event.

Train to Union Station departs 9:00AM and arrives L.A. at 10:40AM
Transfer to Gold Line. Just one stop to Little Tokyo and the Arts District.
Los Angeles is a great place for B & W photography, People and Street Scenes.
Lunch at Little Tokyo or Olvera Street. (Carry your own water and/or snacks if desired.)

Return train from Union Station departs at 3:15PM

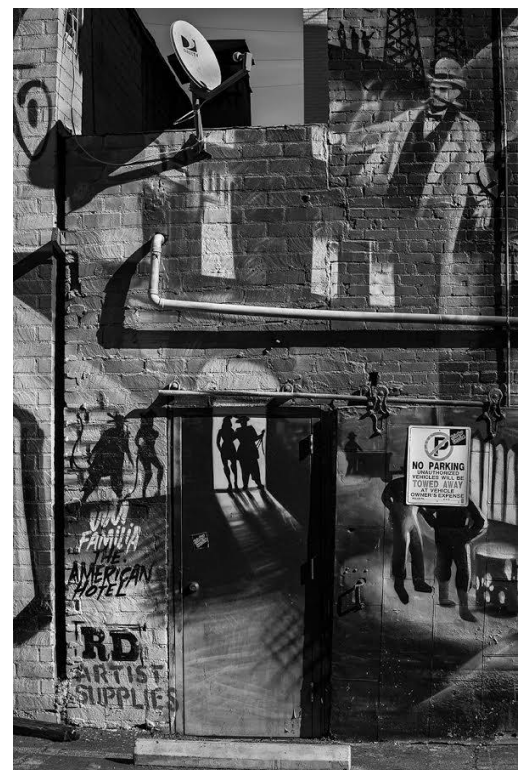
Suggested Equipment:

Camera
Lenses suitable for shooting city scenes
Extra Batteries
Tripod is desired
Hat
Water and snacks

Mary Ann Ponder is helping to lead this field trip. Please contact her at 909-213-5108 or maponder@yahoo.com or me at 909-794-3887 or debbiedsd.dorothy@gmail.com at least a day before if you plan on attending.

If you wish to carpool contact me at the above number to let me know you want to carpool. If I don't hear from anyone I will not meet at the Coco's but go directly to the event.

Photo by Mary Ann Ponder



Prez Says - Dave Ficke

Greetings from Grand Teton National Park!



This trip to the Tetons and Yellowstone was planned 7 months out, and I am having a blast! Being a lover of the wilderness, I am enthralled by this part of the lower 48; it is a landscape photographer's paradise in so many ways. First there is the Teton mountain range, geologically young, with sharp peaks, which jut into the sky, capturing the sun as it rises from the east. Then, when you add the still-present patches of snow that hug those needles of basalt and granite from this past winter, mixed with a few clouds in the sky, you have the recipe for great opportunities in photography!

Secondly, between Grand Teton and Yellowstone NP's, which abut each other, the area teems with wildlife such as buffalo, big horn sheep, elk, moose, the magnificent trumpeter swans, and what all visitors come to see, the bears! Both black and grizzly bears inhabit this protected space, and I was fortunate enough to see and photograph a grizzly family. The sow who is named Bear 399 is the same bear that Tom Mangelson has photographed in Grand Tetons NP, and his work and travels around the world photographing wild and endangered species was showcased recently on 60 Minutes on CBS. One of the challenges I faced, and it is only the beginning of the season, are the crowds of photographers where ever one stops. I have never seen more 500, 600 and 800mm lenses in my life! I am so thankful that the park service has people monitoring the hoards, defending a safe distance between the bears and the people!



While in Grand Teton I sent a friend a photo of the bears, he was so thrilled by my efforts that he offered to come up the next day! His only request: a few hotdogs on the grill. I offered rib eye steaks (I am a great host, after all), but I was told he'd even eat a gopher just to be here. I guess that kind of says it all, but the final reason to be here and experience these historic national parks is to be able to see the last remnants of what America was once to our forefathers, and to appreciate what still remains for us today.

The Greater Teton and Yellowstone ecosystem is the kind of country that can grab the soul and really pull on a person.

When I sort of mentioned to my wife that I would like to move here, I could hear the vertebrae in her neck crack as she swiftly turned her head to me and said, 'What!' Oh, to dream.

The Tetons and Yellowstone need to be on your photographers' bucket list. It offers great landscape, wildlife and wildflowers and with a creative eye, you may discover many other opportunities to be creative; but be careful, if you're not careful, they will grab your soul too!

Tomorrow I go to Yellowstone.

Every Day is Earth Day

Membership - Stephanie Billings

NEWS FLASH!

***You may now join RCC or renew your membership via PayPal
Just go to our WebSite at www.redlandscameraclub.com and
click on the link***



We're off to a Great 2018 Membership Year

Membership Renewal – We have started the renewal process for next fiscal year which starts April 1, 2018. So please make a concerted effort to renew your membership as-soon-possible. \$35 is a great deal for all of the benefits that Redlands Camera Club offers. Only currently paid members can take part in education classes, competitions, events, free workshops, and field trips. Dues are the primary source of club revenue allowing us to provide you with quality programs and training. Contact Stephanie Billings at HeartandSoul4@yahoo.com if you have any

questions about your membership renewal.

Prospective new members please note: At Redlands Camera Club you'll find a group of photo-enthusiasts with a wide range of interests, a ton of experience and a willingness to help you become a better photographer. Our regular club meetings offer stimulating programs, members' nights and competitions; in addition, we offer field trips, workshops, classes and opportunities for mentoring. You can obtain an application form at one of our regular meetings or from our website by going to the club web site (www.redlandscameraclub.org), clicking on the "Downloads" tab and then clicking on "Membership Application" tab. Follow the instructions on the form and your all set!

All members please introduce yourself to our newest members and help direct them to members who can assist them with their photography needs. We try to get a brief Bio from each of our new members. Contact me by email (HeartandSoul4@yahoo.com) If you would like your Bio to be included in the Photogram.

Please help me welcome our newest 2018 members:

Cheryl Challanan

Jana Deaton

Sue King

Janice McConnell

Dale Showman

Charlotte Sven

James Wilson

Competitions - Russ Trozera



Winter is over and Spring has sprung. There were a lot of nice images feature at the Redlands Flower Show by our members. Some of the images had been entered in our competitions. I thought the images were outstanding. I am very impressed by the quality work that our members produce. I recently viewed several galleries across the country and compared our images to theirs. The members of our club produce some very outstanding work.

The competitions are a great way of exposing our work to others and getting practical feed back on our images from people who understand photography. I would like to encourage our members who are just starting out or just getting back into photography to enter the competition. I see a lot of nice work done by photographers who classify themselves as apprentice photographers for the purposes of the competitions. They often times present a fresh of different point of view.

Category X this time will take us back into time to Black & White Photography. Entries in this category will be monochrome images.

Our Summer Digital Competition. It will be held on July 2, 2018 and ribbons will be awarded on July 16, 2018. Members will be allowed to up load 2 images for this competition. Uploading photos will begin on June 4, 2018 and end on June 18, 2018 at 11 PM

Image Specifications:

- 1) The total file size must not exceed 3.5 MB or file will be rejected.
- 2) Files must be sized so the longest dimension is 4,000 pixels.
- 3) Resolution of 200 pixels per inch.
- 4) Each file must contain an embedded color profile of sRGB .
- 5) Save each file at JPEG quality setting 10 (Photoshop) 80 (Lightroom) or equivalent.

Looking forward to seeing many great images. If you have any questions please call Russ Trozera at 760 486 5269

RCC 2018 Spring Competition Third Place Ribbons



Club Calendar

Information that was available to the editor at the time of publication

June 4 -- Creating Great Black and White and Monochrome Images

June 18 -- Above All with Aerial Photographer Mark Holtzman

New – Personal Lightroom Coaching with John Williams

RCC Members: Unique opportunity to make a difference

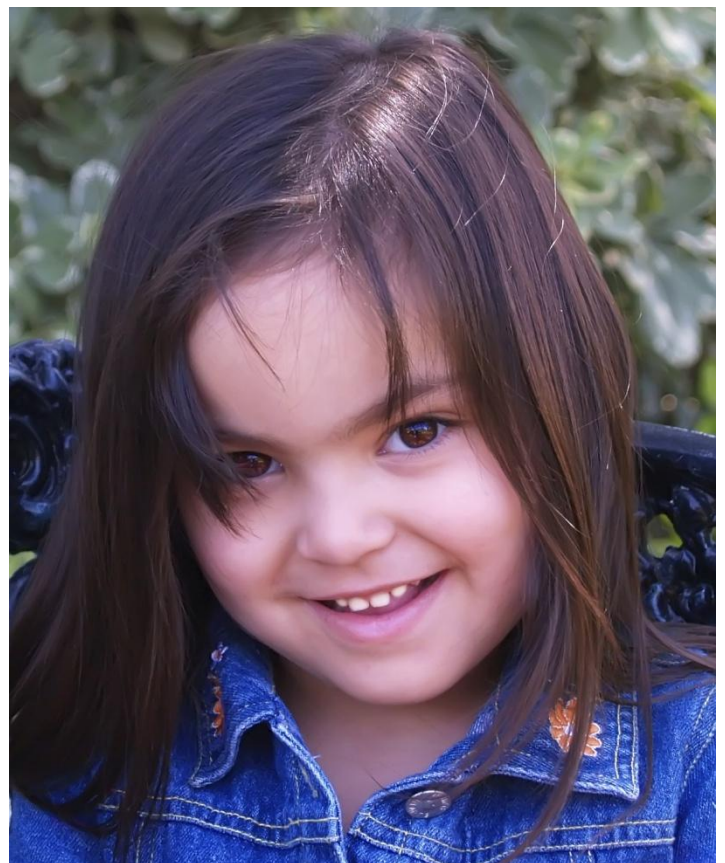
Frank Peele, Education/Workshops Chair

Museum of Redlands

This newly-established museum needs quality photography of items in its collection, and has asked RCC for support. This sounds like a win-win situation, both for the museum and for our members who want to develop skills in “product” photography. I envision a workshop to teach the fundamentals, and one or more shooting sessions to get into creating great images for the museum’s use. If you’re interested in being part of this service to the community, or just want to find out more about the opportunity, shoot me an email:

educationworkshopsrcc@gmail.com Thanks, Frank

Photos by Woody Phillips



(Note: The article covers Photoshop topics. The views expressed in this article are those of the author and do not necessarily reflect the views of Redlands Camera Club.)

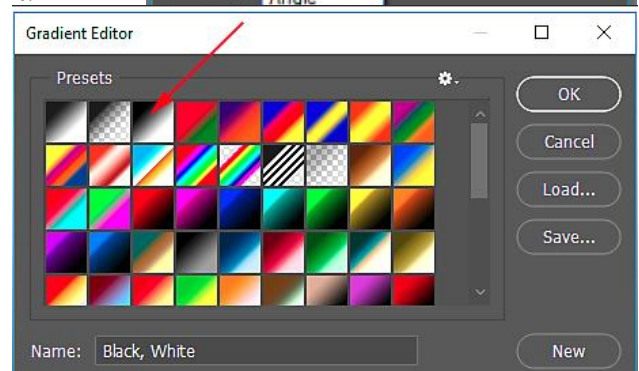
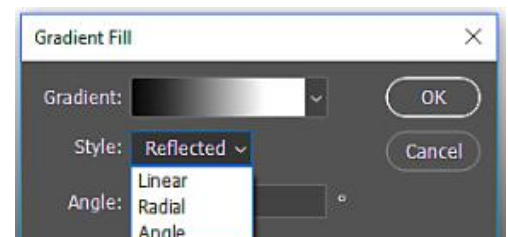
By John Williams

Photoshop Lens Blur Filter for a more natural Bokeh blurring affect

- The **Lens Blur Filter** is used to take a fully focused image and creating a shallow depth of field in which the main subject is in focus and the background element get blurrier the farther they are from the focal point. This method creates a much more realistic shallow depth of field effect. This technique uses the Lens Blur Filter alongside with a Depth Map to determine the areas that stay in focus and which areas receive blur.
- **Depth Maps** are black to white gradients where the black areas in the Depth Map are in-focus and the white regions are out-of-focus areas. The different shades of gray are areas of different levels of focus. To use this filter you make a Depth Map based on luminance values. The figure below shows a Depth Map where the foreground areas is black (in-focus) and the background areas are white (out-of-focus). The middle areas are different shades of gray. The nearer darker gray areas will be more in focus and the receding gray areas will be more out of focus.



- To make a **Depth Map** do the following:
 1. Duplicate your Background Layer (**Ctrl+J**).
 2. **Make a selection of the main subject** and **save** your selection which will become an Alpha channel in the Channels Panel (**Select>Save Selection**).
 3. **Add a Gradient Fill Adjustment Layer** (Gradient - near the top of the adjustment menu). Click on the gradient icon to launch the **Gradient Editor** dialog. Depress the third Gradient icon from the left to add a **Black,White** gradient and in the Style field choose **Reflective**. The resulting gradient will be black in the center (in-focus) and falling off to white (out-of-focus) on both the top and bottom portions of the gradient.
 4. Before clicking the Gradient Fill dialog **OK** button, click your cursor over the darkest area (center) and reposition the gradient down to the bottom of the image if you want that portion of image to be in focus (or where you want the image to be in-focus).
Note: The Image Preview area will show the gradient and not the image below at this point. To help see the image when repositioning the Gradient, reduce the Layer Opacity, double-click the Gradient

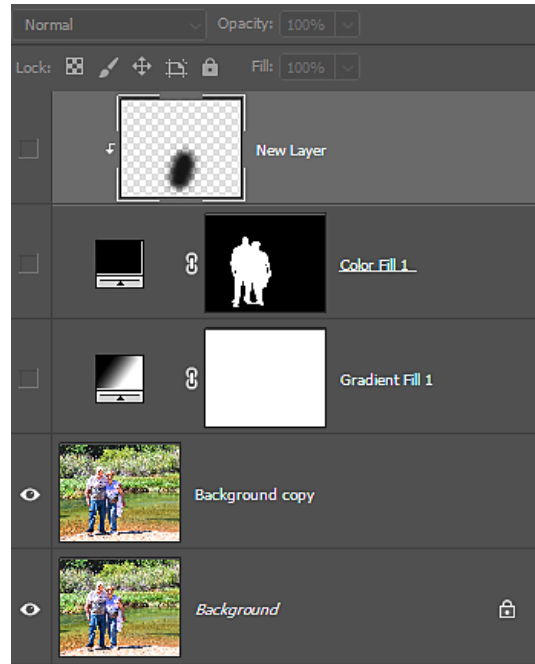


Layer Thumbnail to relaunch the Gradient Fill dialog, hover your cursor over the image and reposition the gradient to the desired position.

5. Open the channels panel and **Ctrl-click** on your saved selection. Then click on RGB in the channels palette (to see your color image) and then click on the Layers palette. At this point you will have marching ants showing over your gradient. Next select the **Solid Color Adjustment Layer** and choose **Black** in the Color Picker. This layer will be above the Gradient Fill layer and the mask will be black except for the selected subject(see figure below). The Image Preview Area will look like the figure below with the main subject black:



Image Preview Area



Layers Panel

6. **IMPORTANT:** If your main subjects are not in the same depth, then you will need to paint the receding subject a dark gray. For example, if your main subject is two people with one person behind the other, then paint the furthest person dark gray using the following procedure.
 - Click on the Foreground Color swatch to launch the Color Picker. With the Eyedropper click on the gradient near where the furthest person is standing to sample that dark gray area. Notice the RGB values will be greater than 0.
 - Click on the **Create a new layer** icon at the bottom the Layers panel and clip it to the layer below (hold down the **Alt** key and click between the layers –shortcut (**Ctrl+Alt+G**)).
 - With a soft edge brush paint over the furthest person. Note: If the two people are holding hands then you want to transition between the dark gray color and pure black. Use a larger brush with the hardness set to 0% to feather. the click the brush once between the transition of pure black and gray.
7. Finally you need to save your Depth Map as a channel. Open the Channels panel and click on any Red, Green, or Red channel (they are all the same) and drag the channel to the **Create new channel** icon. Double click the name and name it **Depth Map**. Click on the RGB channel and return to the Layers panel.
8. Turn off the layer visibility icon for the three layers you used to create your Depth Map (Gradient Fill, Solid Color and New layer) since you will not need them again.
- Highlight the Background copy layer and choose **Filter>Blur>Lens Blur** (note this filter will not work on Smart Layers). Set the following option in the Len Blur dialog:
 1. **Zoom Level:** At the bottom left of the dialog, depress the down arrow and select Fit in View.
 2. Check the **Preview** box.
 3. **Speed:** For a large file (greater than 100 MB), check **Faster** or for a smaller file, check More Accurate.

4. **Depth Map:** In the Source field, choose your Depth Map (one saved in the Channels palette). The grayscale values in the source will control which areas remain in focus (black and dark gray). If you select **None**, the whole image will be blurred uniformly.
 5. **Blur Focal Distance:** Values range from 0 (black) to 255 (white). When you made your Depth Map, pure black (0) is the area that will be most in focus. Therefore, **select 0 for this field**. Note: If you click your cursor on any area in the image, the value displayed will be the grayscale value you clicked on.
 6. **Invert:** If you check this box the white and black areas in the Depth Map will be swapped. Normally you will not check this option.
 7. **Iris:** The default setting is Hexagon (6). Any values less than 6 will be blurred less.
 8. **Radius:** The Radius controls the intensity of the blur.
 9. **Blade Curvature & Rotation:** Normally leave the fields to 0. Drag the Blade Curvature slider to smooth the edges of the iris, or drag the Rotation slider to rotate it.
 10. **Specular Highlights:** You can use the Brightness slider to brighten highlight areas that have become blurred and move the Threshold slider (slightly) to control which tonal range the Brightness setting affects. At 255, only pure white pixels will be affected, whereas at a low setting, most of the blurred areas will be brightened.
 11. **Noise:** If the blurring smoothed out too much noise from the original photo, you can reintroduce noise by moving the Noise: Amount slider slightly, click Distribution: Uniform or Gaussian. To add noise without affecting color, check Monochromatic box and drag the Amount slider to increase or decrease noise.
 12. Finally depress the **OK button**.
- NOTE (1):** At any time while choosing settings, you can uncheck, then recheck the Preview to compare the original and blurred image.
- NOTE (2):** Click your cursor (crosshair icon) on any part of the image that you want to be in full focus (will override your Depth Map).

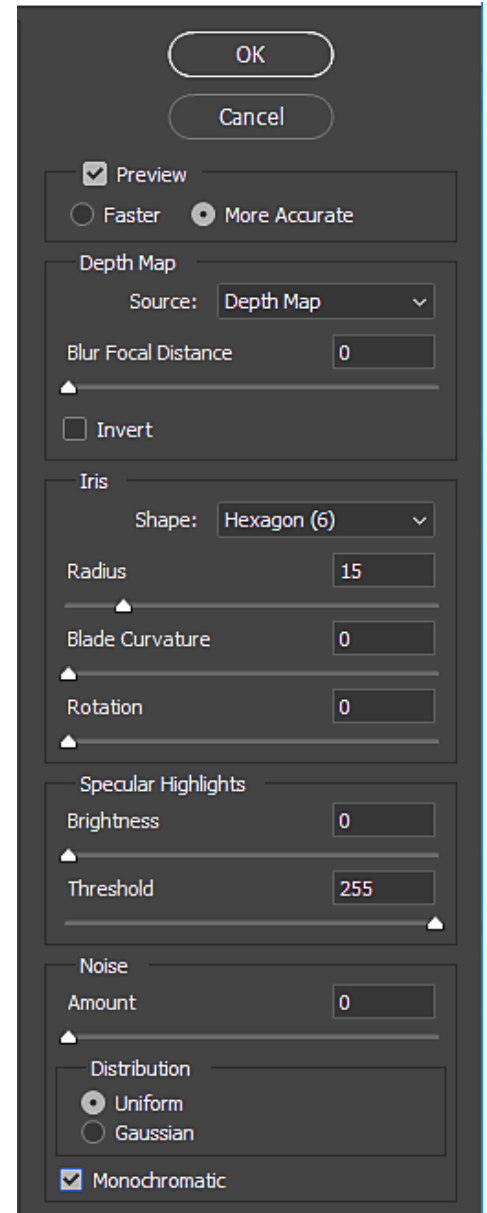
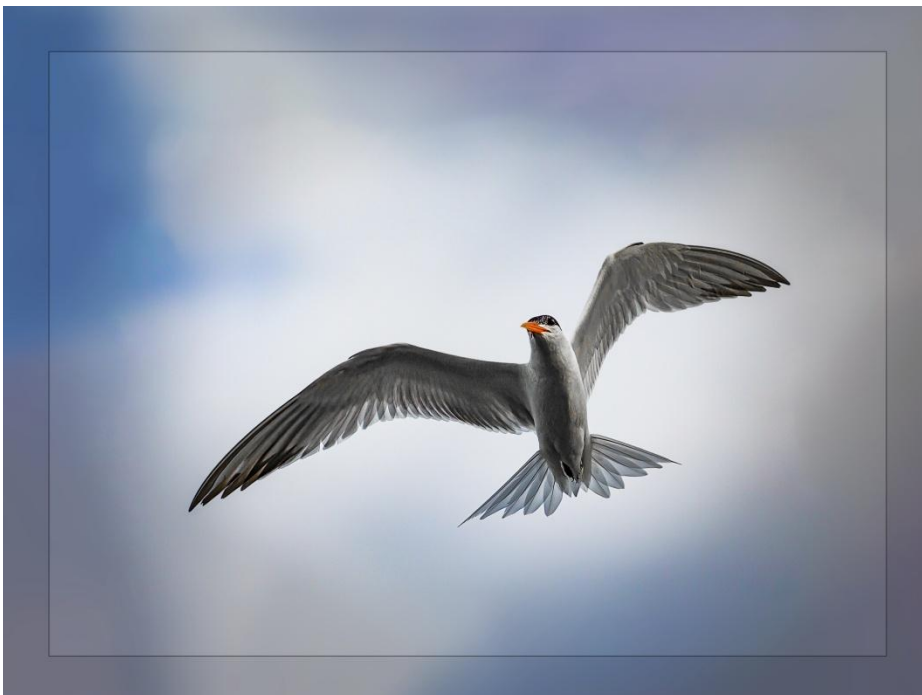


Photo by Bruce Bonnett



S4C Information - Deborah Seibly



For the March competition, honorable mentions and awards were won by Beverly Britt, Jim Hendon and Deb Seibly in the categories of Individual Color, Nature-Wildlife, Photo Travel, Photojournalism and Pictorial Monochrome.

I recommend going to the S4C website to view the catalogue of winners. One will get a feeling for the level of photographic skill represented as well as what photos fit in the many categories.

I continue to encourage members of RCC to enter images in S4C as a further step in your photography adventure. Each competition receives anywhere from 700 to 800 images in total from approximately 15 participating clubs in Southern California. So branch out and try your luck in a bigger pond!

Respectfully submitted
Deb Seibly

Photo by Woody Phillips



Mentor - Rick Strobaugh



Trying something new will benefit not only the newer photographer but also the long time photographer. I have talked to different people in the past who tell me , "oh, I don't shoot that subject matter or location," many times, without trying it first. For both the newer photographer and long time photographer, it could expose you to something new that you may wind up enjoying or to break you out of a rut.

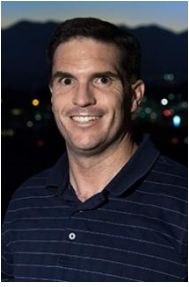
Experiment with different ways to shoot your photos. Try different framing techniques of subjects (shoot through doors, windows, clump of trees or rocks), shoot at a slower shutter speed while moving your camera or zooming in or out for abstracts, shoot locations that you have not shot before, try macro or wide angle, street photography, county/city/renaissance fairs, fast/slow shutter speeds, shallow/deep depth of field focus or wildlife.

There are so many different types of photos to shoot and technique to try. Especially, in southern California where you can be in the desert, mountains or beach within an hour or so from home. Botanical gardens or parks are great locations for experimenting. Everyone automatically thinks of macro at gardens but I have quite often also shot very close with a wide angle. Totally different photo than everyone else is shooting.

Try something different, try something new, expose yourself to new opportunities. You may be surprised how much fun it could be.

Photo by Alex Woodcock





RCC Photo Blog

Carl O'Day

Photo by Debra Dorothy



We are up to 70 users and almost 1,100 images on the RCC Photo Blog. If you do not already have an account, **send an e-mail to signup@rccphotoblog.com** and we will get you set up. The blog is a great place to get input on your images. Other Members' images can help you find some inspiration (and perhaps some motivation).

We are working on the image color issue for some images. When images are submitted they are resized to fit different screens. In this process, they are desaturated a bit. We don't know the cause of the problem yet, but are working on a solution.

I got tired of sifting through photography sites and blogs trying to find useful learning material. In response, I created pbdigest.com – a curated (sort of) collection of photography articles from over 100 photography blogs. Given that this site helps me keep track of useful learning resources, I thought club members may benefit too. I would also be interested in any feedback you might have. Thanks for taking a look and I hope the site is helpful to you.

Film cameras and Lenses Needed

A group of photo-enthusiasts at Riverside Community College needs FILM cameras and lenses to use in their studies. If you have such equipment you're willing to donate to a worthy cause, please contact RCC member Constance St Jean and let her know what you have. **Contact her by email at constancestjean@gmail.com**

For Sale: New in Box

Tascam DR-60D Digital Audio Recorder



Want to greatly improve the audio quality of videos made with your DSLR, Mirrorless or other digital camera? Tascam, the professional division of Teac Audio, has your solution – the DR-60D 4-channel audio recorder. Built to mount under your camera either on or off a tripod, this recorder offers 2 professional balanced XLR or ¼” TRS mic inputs plus a 3.5 mm stereo mic input. Its many modes allow you to capture very high-quality sound, tailor the sound to your preferences, and use microphones of widely different types. The LCD screen is fully visible in

any lighting condition (even direct sunlight), and complete controls put you in charge of your recordings. In addition to its potential for recording audio for video, its many capabilities make it an excellent choice for any high-quality audio recording – music, voice or you-name-it. Unit is in original box, has never been used, and comes with all included accessories. Sells on Amazon for \$179; priced for quick sale at \$119.

Frank Peele, 909.798.7999, or email to FrankPeele@verizon.net

Approximately 30 brand new photo frames for sale. Sized from 8x12 on up to 18x24 and much larger. Contact **Rick Strobaugh:**
rpdrunner@msn.com

Photo by: Rick Strobaugh



Photo by Robert Upton



Redlands Camera Club P.O. Box 7261 Redlands, CA 92375

www.RedlandsCameraClub.com

Officers (2017-2018)

President: Dave Ficke - Vice President/Programs: *Jim Hendon* - Secretary: *Judith Sparhawk*
Treasurer: Ann Kramer - Past President: Carl Detrow -

Chairs (2017-2018)

Competition: *Russ Trozera* - Education/Workshops: *Frank Peele* Facebook/Event
Photographer: *Bruce Woodcock* - Field Trips: *Debra Dorothy*
Historian: *Bruce Bonnett* - Hospitality/Events: *Lucy McGee* - Librarian: *Mary Ann Ponder*
Membership: *Stephanie Billings* - Mentor: *Rick Strobaugh* - Photogram: *Wayne (Woody) Wood*
Publicity: *Alex Woodcock* - S4C: *Deborah Seibly* - Color Munki: *Jim Selby*
Webmaster: *Wayne (Woody) Wood* - Welcome: *Stephanie Billings*